



LISBON
SCHOOL OF
ECONOMICS &
MANAGEMENT
UNIVERSIDADE DE LISBOA

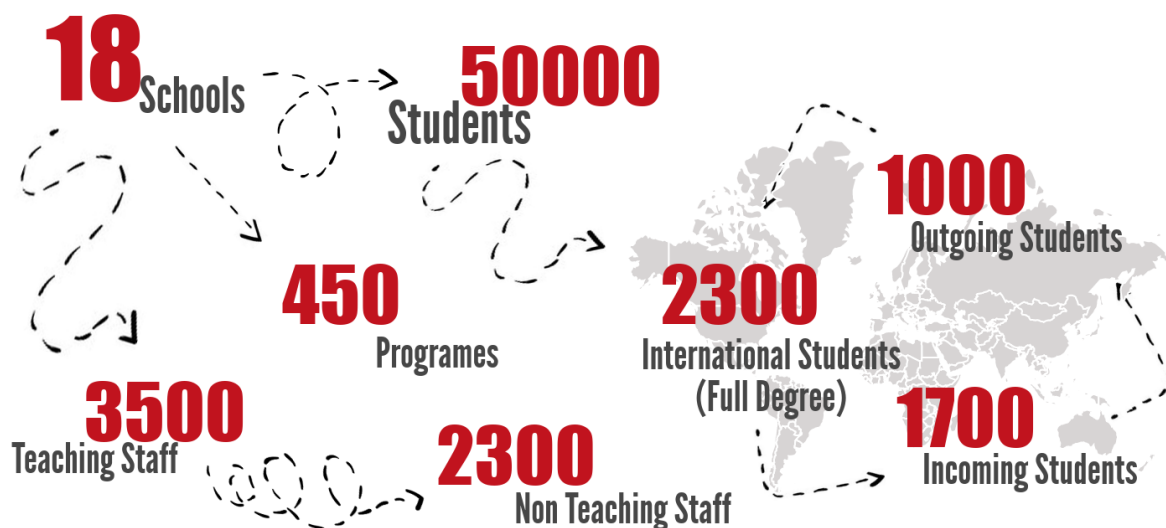
FACT SHEET

2018-2019

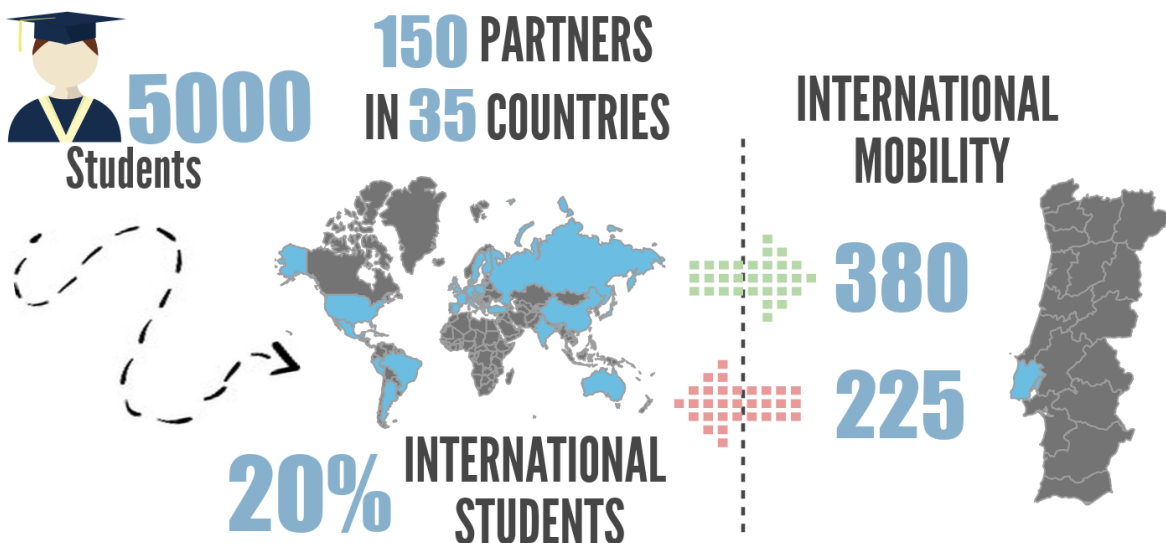
Lisbon School of Economics & Management

Facts and Figures

University of Lisbon



Lisbon School of Economics & Management



Institutional Information



Erasmus Code: P Lisboa 109



imo@iseg.ulisboa.pt



+351 213 922 737



Rua do Quelhas 6 - 1200-781 Lisboa



www.iseg.ulisboa.pt



International_Student_ISEG

International Mobility Office Contacts



Ms. Sónia Domingues

Head of the Academic Services Division



Ms. Rita Jordão

Erasmus+ Institutional Coordinator
and IMO Coordinator



Ms. Cláudia Sousa

Responsible for Outgoing Mobility



Mr. Luis Perez

Responsible for Incoming Mobility

Academic Calendar 2018-2019

1st Semester (Fall)

14th September 2018

17th September 2018

3rd January to 6th February 2019

Welcome Day

Lectures

Assessment

2nd Semester (Spring)

15th February 2019

18th February 2019

3rd June to 6th July 2019

Academic Information

Academic Information

All the information regarding courses offered in English Language, Academic Calendar, Assessment and other useful information may be consult through the following link: goo.gl/cFGb82

Nomination Deadline

Fall semester/Academic Year: April, 30th 2018

Spring semester: September, 30th 2018

Application Deadline

Fall semester/Academic Year: May, 31st 2018

Spring semester: October, 31st 2018

Workload

The normal workload is 30 ECTS per semester.

Recommend Language Skills

Language of instruction English: B2 level*

Language of instruction Portuguese: B2 level*

Official Transcripts

Transcripts are available for all students to download directly from the Faculty's portal "AQUILA" by the end of each semester.

Grading System

For further information about Portugal National Grading System and ECTS grading conversion, please follow the next link: goo.gl/hUYXpB

Useful Information

Cost of Living Expenses



The cost of living in Portugal is lower than in most EU countries. Below you can find an average monthly budget:

Expenses	Price (average)
Accommodation	350€ / 400€
Meals	200€ / 250€
Transports	35€ / 40€
Leisure	100€ / 120€
University (books, etc.)	50€
Total	735€ / 860€

Accommodation



There is no on-campus accommodation at ISEG, but students may find private accommodation either in private student's residences, studios, rooms with a family or shared flats in central Lisbon

Entry Procedures/Visa



To live in Portugal all students must have a travel document, such as a valid passport or a national ID card. Nationals of non-EEA countries must apply for a Study Visa.

This is a special permit for foreign students coming to Portugal (unless the country and Portugal have an agreement which provides exemption from visas). The Visa has to be obtained from the Portuguese diplomatic representative of the home country. This document may be granted on various entry bases.