



# ALUMNI

Creating Leaders Since 1911

**ANA TORRES**  
*ISEG ALUMNA*



President of PWN Portugal (Professional Women's Network).  
Cluster Lead for Western Europe - Rare Disease | Pfizer.



**MÁRIO CENTENO**  
*ISEG ALUMNUS*

Minister of Finance, Portugal  
President of the Eurogroup, European Union.

**FERNANDO MEDINA**  
*ISEG ALUMNUS*



Mayor of the city of Lisbon.



**CELESTE HAGATONG**  
*ISEG ALUMNA*

CEO of COSEC.

**ISABEL MOTA**  
*ISEG ALUMNA*



President of the Calouste Gulbenkian Foundation.



**PAULO MACEDO**  
*ISEG ALUMNUS*

CEO of Bank CGD, Caixa Geral de Depósitos.

**HENRIQUE DE CASTRO**  
*ISEG ALUMNUS*



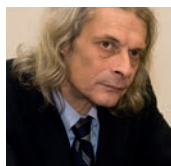
Board of Directors Member of Fiserv,  
Target Corporation, Banco Santander.



**MADALENA TOMÉ**  
*ISEG ALUMNA*

CEO of SIBS - Forward Payments Systems.

**JOÃO MANSO NETO**  
*ISEG ALUMNUS*



CEO of EDP Renováveis.



**PEDRO CASTRO E ALMEIDA**  
*ISEG ALUMNUS*

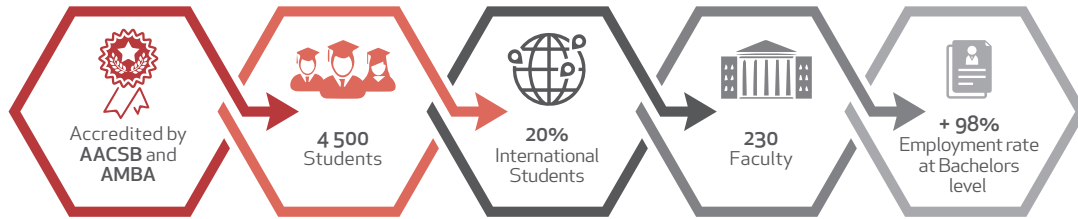
CEO of Banco Santander Portugal.

University of Lisbon

Open minds  
for a better world.



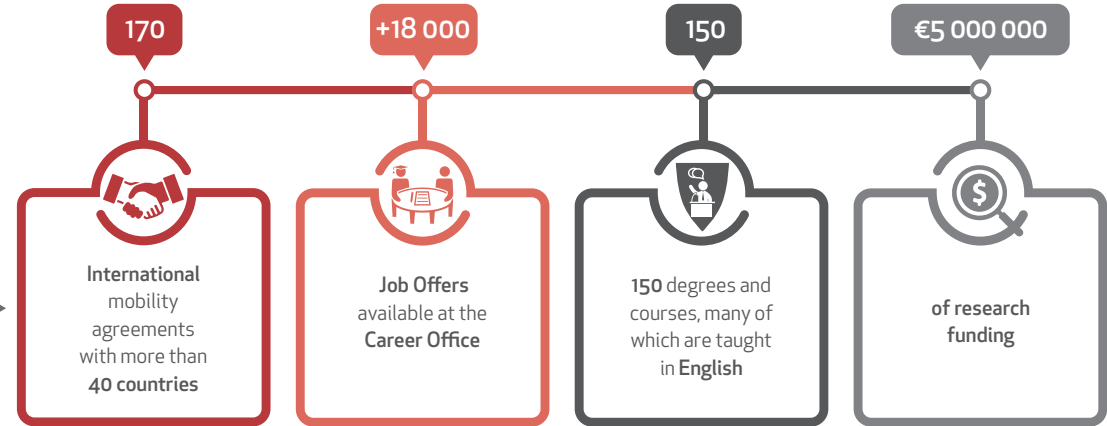
FACTS and FIGURES



1<sup>st</sup> in the ranking of the total number of published Economics & Management papers in Portugal (Web of Science, Scopus)



+ 150 partnership agreements with reputed schools spread around the world.



VERY GOOD RESEARCH CENTERS



Research for Impact, in adherence with UN Sustainable Development Goals

CSG | Centre for Research in Social Sciences and Management

REM | Research in Economics and Mathematics



Main Research Topics

- ▶ Actuarial Science
- ▶ Organizational & Behavioral Economics
- ▶ Big Data and Information Systems
- ▶ Business Analytics
- ▶ Development Studies
- ▶ Finance & Accounting
- ▶ Mathematical Finance



UNIVERSIDADE DE LISBOA



KEY FACTS

- 18 Schools
- 8 Campus
- 50 000 Students
- 411 Degrees & Courses
- 4 800 Regular International Students
- 2 200 International Mobility Students
- 3 700 Faculty
- 82 Research Centers
- €100 million for Innovation & Development
- 7 500 International Projects
- 315 Patent Requests



RANKINGS

- 1<sup>st</sup> University in Portugal (SCIMAGO, ARWU, NTU, CWUR, URAP, CWTR-LEIDEN)
- 2<sup>nd</sup> University in Ibero-america (SCIMAGO)
- 1<sup>st</sup> in Portugal, 75<sup>th</sup> in Europe, 151<sup>th</sup> - 200<sup>th</sup> in the World (SHANGAI RANKING -ARWU)

# AT THE HEART OF LISBON

Lisbon is the beautiful 2 000 years old capital of Portugal, which is one of the most charismatic and vibrant cities of Europe. The traditional heritage blends with remarkable modernism and progressive thinking.

Lisbon is less than an 8 hours flight from North America, and within 3 hours flying time from most European cities. The international airport is only 7 km from the city centre.

ISEG is located in a lively neighbourhood in the city center, near the Portuguese Parliament, and is within walking distance of the Tagus river.

## 10 REASONS for studying at ISEG

- 1 ISEG Lisbon is the Economics & Management School of the top university in Portugal, **Universidade de Lisboa**
- 2 **Internationally-recognised** with accreditation by AACSB and AMBA
- 3 Wide offer of **Bachelors, Masters and PhD Programs** taught in **English** or **Portuguese**
- 4 **International academic environment** with students from more than **70 countries**
- 5 Professional student **Support and Careers Services**
- 6 Powerful **Alumni Association** with **100 years of experience**
- 7 Top-level **faculty** with **PhDs** from renowned international universities
- 8 Very good Research Centers which adhere to **UN Sustainable Development Goals**
- 9 Strong links with the **business community** and **government**
- 10 Located at the **heart of Lisbon** with unique **historic facilities, modern technology** and breathtaking views



### CULTURE

ISEG organises a series of cultural activities over the year, including musical performances, art exhibitions, book reviews, dance, theatre, cinema, and thematic debates, amongst others. The classical music concerts deserve a special mention.



### SPORTS

The University promotes several key sports, as well as the health and well-being of the academic community.



# PROGRAMS >>>>>>>>>

## MASTERS

*Taught in english*

SEPTEMBER 2020

-  > Accounting
-  > Data Analytics for Business
-  > Masters in Management

- > Actuarial Science 
- > Economics
- > Finance 
- > Mathematical Finance
- > Monetary and Financial Economics

## MBA

*Taught in english*

- > ISEG MBA 


## MESTRADOS

*Taught in portuguese*

- > Ciências Empresariais
- > Contabilidade, Fiscalidade e Finanças Empresariais
- > Desenvolvimento e Cooperação Internacional
- > Econometria Aplicada e Previsão
- > Economia e Gestão de Ciência, Tecnologia e Inovação
- > Economia e Políticas Públicas
- > Economia Internacional e Estudos Europeus
- > Gestão de Recursos Humanos
- > Gestão de Sistemas de Informação
- > Gestão e Estratégia Industrial
- > Marketing
- > Metodos Quantitativos para a Decisão Económica e Empresarial

## UNDERGRADUATES

*Taught in english*

- > Economics
- > Finance Dual Degree with 
- > Management

## LICENCIATURAS

*Taught in portuguese*

- > Economia
- > Gestão
- > Matemática Aplicada à Economia e à Gestão

## PhD

*Taught in english*

- > Development Studies
- > Economics
- > Management

## DOUTORAMENTOS

*Taught in portuguese*

- > Gestão
- > Matemática Aplicada à Economia e à Gestão
- > História Económica e Social
- > Sociologia Económica e das Organizações



Executive Education

For more information:  
[www.isegexecutive.education](http://www.isegexecutive.education)

### INTERNATIONAL ACCREDITATIONS:

We are part of a select group (5%) of business schools that have the AACSB and AMBA accreditations.



MEMBER:



RANKINGS:

