

PhD *Programmes*

Open minds for a better world

www.iseg.ulisboa.pt



Index

03 **Welcome to ISEG**

06 **Why ISEG**

08 **PhD Experience**

10 **Research at ISEG**

PhD Programmes

12 Applied Mathematics for Economics and Management

16 Development Studies

20 Economic and Organizational Sociology

24 Economic and Social History

28 Economics

32 Management

36 PhD Programmes in Partnership

Sustainable Energy Systems

Sociology

Sustainability Science

Political Economy

38 **Useful Information**

INSTITUTO SUPERIOR DE ECONOMIA E GESTÃO
UNIVERSIDADE DE LISBOA

Welcome *to ISEG*

At ISEG you will find an environment that is supportive of research, with a friendly atmosphere of sharing and interaction between faculty, researchers and PhD students. We bring together all the necessary means and resources to carry out advanced research in the most cutting-edge research topics. Furthermore, a comprehensive programme of seminars and conferences takes place throughout the year, which you can attend, selectively choosing according to your interests.

We thank you for your interest in our PhD Programmes, which cover different areas of specialization, each targeting a special profile of student. Hopefully we will meet you soon here in Lisbon! But, first, let us highlight 3 good reasons to choose ISEG for your PhD:



Professor Clara Raposo
Dean of ISEG

Professor Manuel Mira Godinho
Vice-Dean of Research



01.

An Experience at the Leading Edge of Knowledge

Unlike all other academic degrees, the main objective of a PhD is to produce new knowledge – in original work that is relevant to society and respected by the scientific community. In our school you will find faculty members who are producing world-class research that is published in top international journals – our PhD students are also expected to present their work in reputed international conferences and publish in high quality scientific journals or in edited books. This is already happening, and you can be next!

02.

Learning Advanced Skills

Whether from a more theoretical or from a more applied perspective, a PhD thesis should involve transfer of knowledge to the economy and society as a whole. In any case, it must incorporate advanced research techniques and methodologies.

With several decades' experience in educating PhD students, at ISEG we know how to identify and develop the critical skills required by these students: the analytical skills, the technical skills, the confidence to be creative, and even the softer skills associated with effective communication.

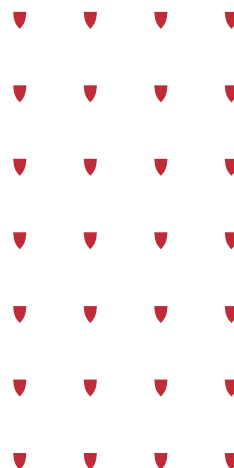
Many of our former PhD students play important roles in academia and in the public and private sectors, as well as in the social economy area.

03.

Excellent Faculty and Graduates

The scientific research carried out by our research units provides an essential support for our offer of PhD Programmes. Based on many consecutive years of experience, ISEG is the School of Economics and Management that produces the largest volume of scientific publication in refereed academic journals (ISI, SCOPUS) in Portugal.

The “António Simões Lopes prize”, which aims to reward the best PhD thesis in the field of Economics and Business Studies carried out in Portuguese universities, was first awarded to Sara Proença for her PhD thesis at ISEG in the field of energy. This prize is sponsored by the Order of Economists, in partnership with PwC. And in 2020 it has again been awarded to a PhD thesis from our school (Jorge Faria Silva).





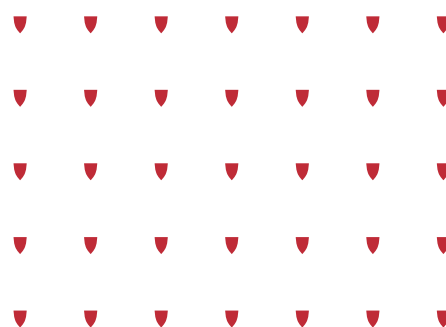
ISEG's Mission is to create and share knowledge and culture in the fields of Economics, Finance and Business, and to enhance its socio-economic value by using an approach of plurality, guaranteeing freedom in intellectual and scientific expression, and respect for ethical principles and social responsibility.

Why **ISEG?**

ISEG is the oldest School of Economics and Management in Portugal, with a tradition of over 100 years in educating Portuguese business and technical elite. With an experienced and well-prepared faculty, ISEG is also recognised for the extraordinary spirit of mutual understanding that is cultivated between its students and faculty. With an ever-increasing focus on internationalisation, ISEG offers a number of programmes taught in English, including three Bachelors degrees and nine Masters, which attract more international students each year.

ISEG offers eight PhD Programmes, six in key fields of study, and another four in partnership with other universities.

The PhD enables students to learn up to the limits of knowledge in an academic environment where research experiences are shared, and ideas and methods are discussed, and where there is always someone who has interests in common. This is what ISEG has to offer in its PhD Programmes. Find out about these topics – and much more - in this brochure, or at iseg.ulisboa.pt



10 reasons why ISEG Lisbon

02

ISEG is a School of the University of Lisbon, a leading university according to the selective Shanghai ranking (ARWU).

05

ISEG has a large and diversified Alumni network.

08

ISEG's PhD programmes students and faculty win prizes for best case studies, best dissertation and research output, and for applied projects and competitions.

03

As part of the University of Lisbon, ISEG belongs to UNITE! – University Network for Innovation, Technology and Engineering – a network that aims to foster cooperation between higher education institutions in Europe.

06

ISEG students' have high Employability.

09

ISEG is committed to the United Nation's Sustainable Development Goals SDGs for 2030.

01

SEG is accredited by AACSB, a distinction earned by only 5% of business schools in the world.

04

ISEG is located downtown Lisbon, a vibrant, multi-cultural, cosmopolitan, and sunny European city.

07

ISEG has High Quality Research Centers.

10

ISEG students benefit from a collegiate and open-minded atmosphere with many opportunities to interact with their peers and with professors. (retirar as máscaras em Collegiate e Open-minded).



KEY FACTS

Universidade
de Lisboa

18

Schools
and Faculties

120

PhD
Programmes

882

PhD
Students

1st

Place in the 2019
SCIMAGO
Research
ranking
and CWUR

ISEG

243

Faculty
Members

109

Years old

+140

Exchange
agreements with
other universities

289

Current
PhD
students

2

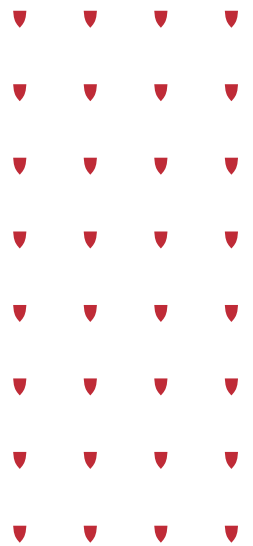
Research units that
are fully accredited
by the national research
council, FCT

10

PhD Programmes,
including 5 in
partnership with
other universities

PhD *experience*

A PhD is designed for those who wish to carry out original research, contributing to the education of leaders in the field of research-based scientific innovation, and also for those who wish to deepen their knowledge.



Necessary Skills

01.

Confidence and
determination

02.

Integrity and responsibility

03.

Good written and oral
communication

04.

A liking for research and
the analysis of information

05.

Good time management
and discipline

06.

A strong motivation
to carry out research

07.

Analytical capacity

08.

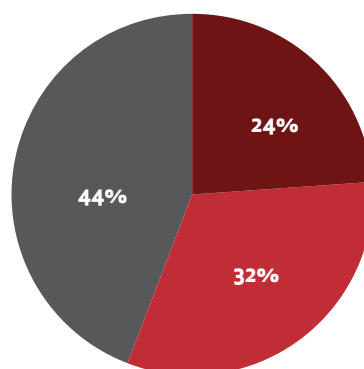
Autonomy and capacity for
decision-making

09.

Leadership capacity

Profile of ISEG's PhD Students*

Academic Background



24%
Economics

32%
Management / Finance

44%
Other

Age Bracket

25 - 45

Gender Distribution



63%



37%

***Based on the number of PhD students enrolled at ISEG between 2016-2019.



Research *at ISEG*

Scientific research is one of the key functions of any university, and thus it plays a fundamental role in the life of ISEG.

ISEG has more than 150 full-time faculty, most of whom are integrated in the research centres which are accredited by FCT (Fundação para a Ciência e a Tecnologia), in the fields of Economics, Management, Applied Mathematics for Economics and Management, Social and Economic History, Economic and Organisational Sociology and Law.

Applicants for the School's PhDs have a variety of scholarships at their disposal to apply for, namely: scholarships for applicants for PhDs at ISEG; ULisboa scholarships, and; FCT scholarships. The criteria, rules and regulations for applying for scholarships are detailed on our website.

ISEG researchers publish in leading scientific journals in their respective fields of study, particularly in the areas of Economics and Management. ISEG publishes two international scientific journals: The Portuguese Economic Journal, and The European Journal of Management Studies.

To assure an environment which is conducive to research, ISEG provides an information and documentation service at the Francisco Pereira de Moura Library, where a large and valuable collection of documents is available for consultation, in the most diverse forms of support (paper and digital), thus allowing for both on-site and online consultation.

At the ISEG Library, users can electronically access bibliographic databases and statistical information, as well as online journals.

Regarding the digital library, several types of databases can be consulted free-of-charge by PhD students, namely: B.On, DOAJ, CPLP, ISI Proceedings, Stor, Proquest Scopus, PorData, Bankscope, as well as various numerical databases, such as Bloomberg, Amadeus, Informa D&B, and others.

Students can also access software programmes such as SPSS, Eviews and Stata for free.



Research Units Based at ISEG

The areas of expertise of ISEG's research units cover the scientific fields of study of the School. ISEG hosts two research consortia evaluated by the Portuguese Foundation for Science and Technology (FCT) as Very Good:

CSG

Research in Social Sciences and Management

CSG is a consortium created in 2013 and aggregates four research units in the fields of Economic Sociology, Economic History, Development Studies and Management:

- **ADVANCE** - Centre for Advanced Research in Management of ISEG
- **CEsA** - Centre for African, Asian and Latin American Studies
- **GHEs** - Centre for Economic and Social History
- **SOCIUS** - Centre for Research in Economic and Organisational Sociology

REM

Research in Economics and Mathematics

REM is a consortium created in 2017 and aggregates two research centers in the fields of Economics and Mathematics:

- **UECE** - Research Unit on Complexity and Economics
- **CEMAPRE** - Mathematics Applied to Forecasting and Economic Decision

Both consortia support the experimental facility XLAB - Behavioural Research Lab.



PhD in *Applied Mathematics* for *Economics* and *Management*

This programme prepares students to carry out research work worthy of publication in scientific journals with a peer-review system. It aims to develop the skills needed to devise and implement new mathematical methods that could be used to tackle problems in the areas of Economics and Management.

Taught in English

Scientific Board

M. Teresa Chaves De Almeida
(Coordinator)
Full Professor

Filipe Serra De Oliveira
Senior Associate Professor

Nuno Sobreira
Assistant Professor

Target

The PhD Programme in MAEG (Applied Mathematics for Economics and Management) is designed to meet the needs of those who wish to enhance their knowledge of mathematical methods and techniques in order to make original contributions in a particular field or to develop and implement solutions for problems in the areas of Economics and Management.

Entry Conditions And Selection Criteria

The entry requirements are an MSc or BSc degree (with a curriculum of four years or more) in Mathematics, Statistics, Economics, Finance, Management, Physics or Engineering. The degree curriculum and the marks obtained must provide evidence that the applicant has a strong background in Mathematics. Applicants who have not yet completed the degree may be accepted conditionally if they expect to do so before the beginning of the Program. Applicants who do not hold any of the degrees listed above may also be accepted, provided that the CV is deemed suitable for the Program.

Study Topics

The research topics are the following:

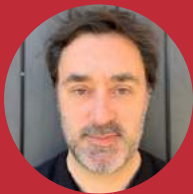
- > Actuarial Science;
- > Dynamical Systems;
- > Financial Econometrics;
- > Financial Mathematics;
- > Macro and Micro-econometrics;
- > Mathematical Analysis;
- > Operational Research;
- > Statistics;
- > Time Series.

Structure of the Program

The PhD Programme spans over a total of three years. The first year is devoted to coursework, and includes the preparation, presentation and defense before an evaluation committee of the student's thesis research project. Please note that if there are any non-Portuguese speakers registered in a course, the lectures will be taught in English. The following two years are dedicated to research, leading to the design, writing and defense of an original dissertation in an area of Applied Mathematics for Economics or Management.

“

I believe Quantitative methods, and in particular Operational Research, can provide extremely valuable management decision systems to any organization. Pursuing a new direction in my professional career I decided to return to ISEG and enroll in the MAEG PhD programme looking to enrich and develop my skills in that scientific field. My objective was fully met. From the excellence lecturing faculty, supervisors, teaching and research resources to the material and administrative supporting conditions, the MAEG PhD ISEG programme delivered everything I was expecting. I strongly recommend it to anyone interested.



Carlos Martins

Director na Create Business LDA.

“

The MAEG PhD programme was an extremely enriching experience in personal, academic and professional terms. As I have an academic background in Mathematics and Statistics, attending this PhD programme allowed me to explore a new, more applied area of research, developing knowledge and methodologies in an area as fundamental as Finance. It is worth mentioning the quality and monitoring carried out by the faculty throughout the program, the environment for sharing experiences and knowledge, the motivation to participate in seminars and conferences, thus instilling in all of us a critical spirit and constant questioning, which allows us to grow as researchers and academics. It was a challenge that will certainly mark the rest of my life.



Liliana Pereira

Invited Adjunct Professor at the
Higher Professional Technical
School of the Polytechnic
Institute of Cávado e Ave



Faculty and Subject Areas

Alexandra Moura
PhD Politecnico di Milano, Italy
Numerical Analysis, Statistics, and Actuarial Sciences

Alfredo Egídio dos Reis
PhD Heriot-Watt University, Edinburgh, UK
Actuarial Science

Amélia Bastos
PhD ISEG, Universidade Técnica de Lisboa
Economics and Statistics

Ana Margarida Neto
PhD Faculdade de Ciências, Universidade de Lisboa
Mathematics – Algebra

Artur da Silva Lopes
PhD ISEG, Universidade Técnica de Lisboa
Macroeconometrics

Carlos Oliveira
PhD Instituto Superior Técnico, Universidade de Lisboa
Stochastic Optimisation

Fernando Gonçalves
PhD University of Edinburgh, UK
Mathematical Finance and Numerical Analysis

Filipa Duarte de Carvalho
PhD ISEG, Universidade Técnica de Lisboa
Operational Research

Carlos Oliveira
PhD Instituto Superior Técnico, Universidade de Lisboa
Stochastic Optimisation

Fernando Gonçalves
PhD University of Edinburgh, UK
Mathematical Finance and Numerical Analysis

Filipa Duarte de Carvalho
PhD ISEG, Universidade Técnica de Lisboa
Operational Research

Graça Leão Fernandes
PhD ISEG, Universidade Técnica de Lisboa
Economics of Education

Isabel Proença
PhD Université Catholique de Louvain, Belgium
Applied Micro-econometrics and Panel Data

João Andrade e Silva
PhD ISEG, Universidade Técnica de Lisboa
Actuarial Science

João Dias
PhD ISEG, Universidade Técnica de Lisboa
Econophysics, Statistics, and International Economics

João Guerra
PhD Universidad de Barcelona, Spain
Stochastic Analysis and Mathematical Finance

João Janela
PhD Instituto Superior Técnico, Universidade Técnica de Lisboa
Numerical Analysis

João Lopes Dias
PhD Cambridge University, UK
Dynamical Systems

João Nicolau
PhD ISEG, Universidade Técnica de Lisboa
Financial Econometrics

Jorge Caiado
PhD ISEG, Universidade Técnica de Lisboa
Econometrics and Forecasting

José Passos
PhD University of Bristol, UK
Micro-econometrics

José Pedro Gaivão
PhD University of Warwick, UK
Dynamical Systems

Leonor Santiago Pinto
PhD ISEG, Universidade Técnica de Lisboa
Operational Research

Lígia Amado
PhD ISEG, Universidade Técnica de Lisboa
Operational Research

Manuel Castro Guerra
PhD Universidade de Aveiro
Optimisation and Control Theory

Margarida Moz
PhD ISEG, Universidade Técnica de Lisboa
Operational Research

Margarida Vaz Pato
PhD Faculdade de Ciências, Universidade de Lisboa
Operational Research

Maria Cândida Mourão
PhD ISEG, Universidade Técnica de Lisboa
Operational Research

Maria de Fátima Fabião
PhD ISEG, Universidade Técnica de Lisboa
Mathematical Finance and Differential Equations

Maria de Lourdes Centeno
PhD Heriot-Watt University, UK
Actuarial Sciences

Maria Do Rosário Grossinho
PhD Faculdade de Ciências, Universidade de Lisboa
Mathematical Finance and Differential Equations

Maria Teresa Almeida
PhD London School of Economics, University of London, UK
Operational Research

Nicoletta Rosati
PhD Università di Padova, Italy
Econometrics and Panel Data

Nuno Crato
PhD University of Delaware, USA
Econometrics and Time Series

Nuno Sobreira
PhD Universidade Nova de Lisboa
Econometrics and Time Series

Onofre Simões
PhD ISEG, Universidade Técnica de Lisboa
Actuarial Sciences

Pierre Hoonhout
PhD University College London, UK
Econometrics and Panel Data

Raul Brás
PhD ISEG, Universidade Técnica de Lisboa
Operational Research

Rui Paulo
PhD Duke University, USA
Statistics

Telmo Peixe
PhD Faculdade de Ciências, Universidade de Lisboa
Dynamical Systems



Details and Study Plan

Schedule:
Evening Lectures

Participating Centres:
APPLIED MATHEMATICS (CEMAPRE),
ECONOMICS (UECE).

Start Date:
September

Tuition Fees:
€3,000 – 1st Year;
€2,000 – 2nd – 3rd Years;
€1,000 – 4th – 6th Years



year 1	Course Units	Professor	Credits	Semester
	Advanced Topics Of Econometrics*	Pierre Hoonhout	10	1
	Advanced Topics Of Statistics*	Rui Paulo	10	1
	Analysis And Optimisation*	Manuel Castro Guerra	10	1
	Computational Mathematics*	João Janela	10	1
	Elective	-	6	1
	Seminar I	Teresa Chaves de Almeida	4	1
	Elective	-	6	2
	Preparation Of The Thesis Project	Teresa Chaves de Almeida	24	2

*The Scientific Board of the PhD chooses two out of the four course units for each student.

year 2	Course Units	Professor	Credits	Semester
	Thesis (Research Seminar)	-	60.0	-

year 3	Course Units	Credits	Semester
	Thesis (Research Seminar)	60.0	-

electives	Course Units	Professor
	Advanced Risk Theory	Alfredo Egídio Dos Reis
	Financial Econometrics	João Nicolau
	Macroeconometrics	Artur Da Silva Lopes
	Mathematical Methods For Finance	João Guerra
	Operational Research	Teresa Chaves De Almeida
	Panel Data	Isabel Proença
	Time Series Analysis And Forecasting	Jorge Caiado

PhD in *Development Studies*

Taught in English

ISEG Scientific Committee

Francisco Louçã

Alexandre Abreu

Carlos Castel-Branco



ICS Scientific Committee

Olivia Bina

Simone Tulumello

Roberto Falanga



IGOT Scientific Committee

Jorge Malheiros

Margarida Queirós

Mário Vale



ISA Scientific Committee

Luís Goulão

José Lima Santos

Luís Mira da Silva



Target

Anyone interested in obtaining advanced academic training and doing research with a view to working in jobs related to international and national development in the public sector, the private sector, or the non-profit sector. Out-going students can find employment in teaching and research posts, managerial and executive positions in international and national organisations, consultancy, training, research projects, journalism, planning, development projects, public policy planning and evaluation, and social projects and social policies.

This programme is lectured in English, but offers tutorials in both Portuguese and English. The PhD thesis may be written in Portuguese or English.

Entry Conditions And Selection Criteria

Anyone holding a masters degree in the areas of economics, management, law, sociology, geography, political science, international relations, history, anthropology, or any other area deemed appropriate. Students who obtained a GPA of 16 or more (out of 20) or, in special circumstances. Students whose GPA is lower than 16 but have demonstrated appropriate academic training or professional experience may also apply. The Scientific Board of the PhD programme will choose candidates on the basis of the following criteria:

- > Masters and respective final grade;
- > First degree and respective final grade;
- > Academic and relevant professional experience;
- > Research proposal.

Study Topics

Research topics for the doctoral thesis and course units are grounded in a broad range of issues related to the development of contemporary societies and its methodological variables and analytical tools. The emphasis is on poverty, inequality and equity issues; development economics and aid finance; sustainable development and transitions; development cooperation, policy and political issues; geography and urbanization; mobility and migration; gender studies; security-development nexus; sustainable consumption, agriculture and contemporary agrarian transformation; food production and ecosystem services; and modernity theoretical challenges to development.

As a Development Studies programme, interdisciplinary links are established between economics, sociology, geography, social and economic history, political science and law, and environmental and agrarian studies - thus providing an integrated perspective on development and sustainability issues in contemporary societies. Great attention is paid to the improvement of students' skills on research methods and techniques required for development studies. Successful candidates will have different disciplinary, cultural and experiential backgrounds, and this is considered a crucial part of the learning experience. The PhD programme's themes are explored through course units including: theories of development and modernity, the policy and politics of development, sustainability transitions and a focus on urban and rural development. Through these units we encourage dialogue and team work to maximise the benefit of diverse backgrounds and worldviews.

Structure of the Program

The PhD Development Studies is a three-year programme in which students must obtain a total of 180 ECTS (credits). It comprises:

- ▼ Courses (60 credits ECTS);
- ▼ Preparation, submission and defense of thesis (120 ECTS).

Courses are taught in the first year of the Program over 2 semesters. They are:

1ST SEMESTER

- ▼ Theories of Modernity and Development (9.0 credits ECTS)
- ▼ Development in Transition (12.0 credits ECTS)
- ▼ Research Methods in Development Studies (6.0 credits ECTS)
- ▼ Research Seminar I (3.0 credits ECTS)

2ND SEMESTER

- ▼ Development Policy and Politics (7.5 credits ECTS)
- ▼ Research Essay (4.5 credits ECTS)
- ▼ Topics in Development Studies (3.0 credits ECTS)
- ▼ Elective Modules of Research Methods (6.0 credits ECTS)
- ▼ Research Seminar II (3.0 credits ECTS)
- ▼ Elective Unit (6.0 credits ECTS)

The classes run at ISEG (coordinating institutions) and at the other Schools (ICS, IGOT and ISA) according to a schedule to be announced.

“

I joined the PhD in Development Studies after an experience of over seven years managing international development projects and programs. With a background in Political Science and International Relations and an MSc in Development Studies, I felt the need to go back to academia and build new bridges between theory and practice. In development cooperation, especially in the current global transition context, strong research skills and the capacity to analyse complex systems are key for any professional. This PhD is a joint program between ISEG and other three schools of the University of Lisbon (Agronomy, Geography and Urban Planning, and Social Sciences), providing the multidisciplinary perspective we need to approach global development challenges. A diverse body of teachers and researchers is available to provide input to our ongoing research, which I found especially useful. I will surely rely on this experience to continue growing as an international development researcher-practitioner.



Ana Luísa Silva

PhD Student

“

The PhD in Development Studies is a multidisciplinary and heterodox program that has enabled me to acquire distinctive aptitudes to understand socio-economic development phenomena. This program is unique in that it offers a comprehensive approach that simply cannot be found in most advanced economics courses. In addition, having a after working hours regime and a particularly interesting offer for professionals from Portuguese-speaking countries or from the global south in general, this PhD is specially tailored for consultants like me in the area of development and multilateral cooperation. The teaching staff mirrors this multidisciplinary model and the fact that the PhD is developed by four different schools at the University of Lisbon is one of the strengths of the course. Overall, my experience has been very positive, with the PhD not only contributing to my growth as a professional, but also to my development as a citizen.



Diogo Maia

Researcher at CeSA - Center for African and Development Studies
Senior Economics Consultant at NEMUS - Gestão e Requalificação Ambiental

Faculty and Subject Areas

Coordination Committee

Francisco Louçã (ISEG, coordinator)

PhD Economics, ISEG, 1996, ISEG, Universidade de Lisboa.

Olivia Bina (ICS)

PhD and MPhil in Geography, University of Cambridge, UK

Jorge Malheiros (IGOT)

PhD in Human Geography, Universidade de Lisboa

Luis Goulão (ISA)

PhD in Agronomic Engineering, ISA- Universidade de Lisboa

Alexandre Abreu (ISEG)

PhD in Economics, School of Oriental and African Studies, University of London

Alice Sindzingre

PhD from Ecole des Hautes Etudes en Sciences Sociales, France. Development Economics, Institutions and Political Economy

Amélia Branco

PhD from ISEG, Universidade Técnica de Lisboa

Ana Bela Nunes

PhD from ISEG, Universidade Técnica de Lisboa

António Goucha Soares

PhD from European University, Italy
European Law, European Studies, International Organisations and Regional Integration

Bernardo Pacheco de Carvalho

PhD from Minesota University, USA

Carlos Farinha Rodrigues

PhD from ISEG, Universidade Técnica de Lisboa
Income Distribution, Inequality, Poverty Analysis, Public Economics, Social Policy and Quantitative Methods

Daniel Bach

PhD from Oxford University, UK

Emília Araújo

PhD from Universidade do Minho

Fernando Luís Machado

PhD from ISCTE- IUL

Fernando Ribeiro Mendes

PhD from Institut d'Etudes Politiques, France

Francisco Nunes

PhD from ISEG, Universidade Técnica de Lisboa

Helena Jerónimo

PhD from University of Cambridge, UK

Horácio Faustino

PhD from ISEG, Universidade Técnica de Lisboa

Inês Raimundo

PhD from University of the Witwatersrand, Johannesburg, South Africa

Isabel Castro Henriques

PhD, Universidade Nova de Lisboa

João Carlos Graça

PhD from ISEG, Universidade Técnica de Lisboa
Political Sociology and Research Methods

João Estêvão

PhD from ISEG, Universidade Técnica de Lisboa

João Mosca

PhD from Universidad de Córdoba, Spain

João Peixoto

PhD from ISEG, Universidade de Lisboa
International Migration, Demography and Economic Sociology

Jochen Oppenheimer

PhD from Kassel University, Germany

José Monteiro Barata

PhD from ISEG, Universidade Técnica de Lisboa

Luís Francisco Carvalho

PhD from ISCTE-IUL
Economics and Globalisation, Governance, Economics and Society

Luís Mah

PhD from London School of Economics, UK
International Economics and Development

Luís Mira

PhD from University of Reading, UK

Manuel Abrantes

PhD from ISEG, Universidade de Lisboa
Sociology and Qualitative Methods

Manuel Ennes Ferreira

PhD from ISEG, Universidade Técnica de Lisboa

Manuel Mira Godinho

DPhil from University of Sussex, UK

Manuel Pacheco Coelho

PhD from ISEG, Universidade Técnica de Lisboa

Manuela Arcanjo

PhD from ISEG, Universidade Técnica de Lisboa

Maria João Santos

PhD from ISEG, Universidade Técnica de Lisboa

Maria Paula Fontoura

PhD from ISEG, Universidade Técnica de Lisboa

Maria Rosa Borges

PhD from ISEG, Universidade Técnica de Lisboa

Miguel Amaral

PhD from ISEG, Universidade Técnica de Lisboa

Miguel St Aubyn

PhD from London Business School, UK

Nuno Valério

PhD from ISEG, Universidade Técnica de Lisboa

Paula Cristina Albuquerque

PhD from ISEG, Universidade Técnica de Lisboa

Paulo Lopes Henriques

PhD from ISEG, Universidade Técnica de Lisboa

Paulo Trigo Pereira

PhD from University of Leicester, UK

Paulo Oicaluga Nevado

PhD from ISEG, Universidade Técnica de Lisboa

Pedro Verga Matos

PhD from Faculdade de Economia, Universidade do Porto

Rafael Marques

PhD from ISEG, Universidade Técnica de Lisboa

Rita Martins de Sousa

PhD from ISEG, Universidade Técnica de Lisboa

Rui Brites

PhD from ISCTE - IUL.
Strategic Management, Marketing and Qualitative Methods

Sara Falcão Casaca

PhD from ISEG, Universidade Técnica de Lisboa

Susana Santos

PhD from ISEG, Universidade Técnica de Lisboa

Vítor Corado Simões

PhD from ISEG, Universidade Técnica de Lisboa

Details and Study Plan

Schedule:
Evening Lectures

Participating Centres:
CSG – ISEG; UECE-ISEG
ICS – ULisboa; CEG-IGOT
LEAF-ISA; CEF-ISA

Start Date:
September

Tuition Fees:
€3,000 – 1st Year;
€2,000 – 2nd – 3rd Years;
€1,000 – 4th – 6th Years



year 1

Course Units	Professor	Credits	Semester
Development Theories	Carlos Castelo-Branco Alice Sindzingre	7.5	1
Research Methods and Techniques	Carlos Farinha, Rui Brites, Manuel Abrantes, João Carlos Graça	7.5	1
Seminar I	-	7.5	1
Elective I	Luis Mah	7.5	1
Development History and Policies	Joana Pereira Leite	7.5	2
Seminar II	José António Pereirinha	7.5	2
Research Seminar	Marta Pedro Varanda	7.5	2
Elective II	-	7.5	2

year 2

Course Units	Professor	Credits	Semester
Thesis (Research Seminar)	-	60.0	-

year 3

Course Units	Professor	Credits	Semester
Thesis (Research Seminar)	-	60.0	-

PhD in *Economic and Organizational Sociology*

The PhD in Economic and Organisational Sociology is a 3rd cycle degree, launched in 1991, which aims to further knowledge and produce original research. It is hosted by SOCIUS/CSG (Research Centre in Economic and Organisational Sociology), a research unit belonging to ISEG and evaluated as Excellent by FCT, the national Foundation for Science and Technology.

Taught in Portuguese

Scientific Board

Sofia Bento (Coordinator)
Associate Professor

João Peixoto
Full Professor

Rafael Marques
Assistant Professor

Daniel Seabra Lopes
Assistant Professor

Target

Anyone who wants an advanced education and who wishes to carry out research with the aim of working in a highly qualified position in the public sector, the private sector and the social economy sector, in an international or national context. Such roles might include teaching and research, leadership and management of organisations, consulting, training, research study and projects, journalism, planning, project development, and the design and evaluation of public policies and of social projects and policies.

Study Methodology

A brief proposal regarding the research topic of the PhD thesis is presented by the candidate upon admission. After being accepted for the program, a supervisor is appointed to tutor the student during the indepth preparation of the thesis project during the 1st year, which is presented and discussed during the Research Seminar. At the end of the 1st year, a consolidated version of the thesis project is assessed by an examination panel comprised of representatives from ISEG and other institutions, which may suggest alterations, or recommend that the student discontinue their studies. When the thesis project is accepted, it is then registered and the name of the supervisor is confirmed. The process of preparing, researching and writing a thesis

lasts for two academic years, according to the Rules and Regulations for ISEG PhD Programs.

The admission in the PhD in the academic year 2019/2020 includes registration for the 1st International Workshop on Economic and Organisational Sociology, «Contestation over Markets and Industries: Moral Shifts, Power Struggles and Senses of Repulsion», 26-27 September 2019, ISEG, Lisbon (organized by the PhD in Economic and Organisational Sociology, SOCIUS/CSG).

Entry Conditions And Selection Criteria

Candidates must hold a Masters in the scientific fields of Sociology, Economics, Management and other Social Sciences considered acceptable by the Scientific Board. Anyone who only holds a Bachelors in one of these subjects may also apply, as long as they have a minimum grade of 16, or exceptionally a lower grade, alongside a curriculum that proves an adequate scientific background or professional experience. Other candidates who demonstrate an ability to study for this degree may also be admitted. The selection is made by the Scientific Board of the PhD program, based on the following criteria:

- > Masters and respective final grade;
- > Bachelors and respective final grade;
- > Scientific curriculum and relevant professional experience;
- > Research proposal.

Themes and Topics

What are the effects of a rapidly changing global economy? What is the role of states, markets, institutions, organisations and individuals in shaping economic and financial practices? Which explanatory links may be found, both historically and currently, between the economy and politics, culture, technology or the environment? Are all markets ethical? How are global citizens involved in decision-making processes regarding their economic and financial daily lives? How are organisations reshaped? How is work balanced with other dimensions of human life in the 21st century? And what is the role of knowledge production in the Anthropocene age? These are some of the questions discussed in the course units and around which consolidated research is being carried out. The themes and topics for this PhD evolve around economy, finance and organisations in our contemporary societies. The program proposes to look at markets and organisations as nuanced, complex and sometimes conflicting social realities, thus challenging students for new readings of the rationalist paradigm of neoclassic economics, that focuses on the optimal behaviour of economic agents. Making visible the interplay between economic, social and cultural dimensions in the constitution of individual agents and their societies, this program contributes to enrich the existing array of social science accounts of the economy through a multidisciplinary approach. PhD students might conduct research in the fields of economic sociology, organisation studies, sustainable development, science and technology studies, social studies of finance, classic sociological theory, cultural economy, migration studies, gender studies and value theory, among others. Therefore, a variety of research objects can be investigated, namely public policies, corporate social responsibility, corporate governance, formal and informal markets, alternative economies and the DIY culture, property rights, cultural industries, money and payment systems, professions and work or third sector organisations. Different methodological approaches can also be deployed, from logistic regression models and statistical analysis, to experimental studies, participant methodologies, ethnography and network analysis.

The program benefits from a dynamic environment of discussion and active feedback among the academic community of students, researchers and lecturers of SOCIUS/CSG, the Research Centre in Economic and Organisational Sociology. For instance, the PhD comprises a series of annual conferences, workshops and seminars, where students may present and discuss their work and expose it to other national and international researchers, policy-makers and members of the civil society. The program also benefits from several links between SOCIUS/CSG and other national and international research networks, as well as from its location in the historical centre of a vibrant city, Lisbon.

“

When I decided to start the PhD Program in Economics and Organizational Sociology, I wanted to invest in my professional career and increase my research skills. So far these objectives have been accomplished since the program provides a challenging educational experience within a multicultural research environment. It includes seminars, conferences, workshops, teaching and project opportunities in cooperation with other national and international research centres. Besides that, ISEG stands out for the seriousness and scientific quality of its teaching staff, which is distinguished by its supportive, integrated and human approach.”



Helena Gata

PhD Student in Economics and Organizational Sociology
Strategic Management Consultant and ESLIDER Portugal President



Faculty and Subject Areas

Amlcar Moreira

PhD, University of Bath
Social Policies, Pensions, Poverty and
Income Distribution

Daniel Seabra Lopes

PhD from Universidade Nova de Lisboa
Social Studies of Finance, Economic
Sociology and Organisational Ethnography

Idalina Sardinha

PhD from University of Amsterdam, Holland
Corporate Social Responsibility and
Development

João Carlos Graça

PhD from ISEG, Universidade de Lisboa
Sociological Theory

João Peixoto

PhD from ISEG, Universidade de Lisboa
International Migration, Demography and
Economic Sociology

Maria João Santos

PhD from ISEG, Universidade de Lisboa
Organisational Theories and Sociology
of Work

Marta Varanda

PhD from Université des Sciences et
Technologies de Lille, France
Public Policy Implementation and
Hydrological Resources Management

Rafael Marques

PhD from ISEG, Universidade de Lisboa
Sociology of Morality, Social Theory,
Economic Sociology and Political Sociology

Rita Raposo

PhD from ISEG, Universidade de Lisboa
Urban Studies, Sociology of Culture and
Social Theory

Sara Falcão Casaca

PhD from ISEG, Universidade de Lisboa
Sociology of Work, Gender Studies and
Research Methods

Sofia Bento

PhD from École des Mines de Paris, France
Social Studies of Science and Technology

Guest Speakers from Previous Editions

Afonso Sousa-Poza

PhD from University of Hohenheim,
Germany

Bruce Carruthers

PhD from Northwestern University,
USA

Enzo Mingione

PhD from Università di Milano-Bicocca,
Italy

Ezra W. Zuckerman

PhD from MIT Sloan School of Management,
USA

Juan José Castillo

PhD from Universidad de Madrid,
Spain

Maurício Serva

PhD from Universidade Federal de Santa
Catarina, Brazil

Mike Saks

PhD from University Campus Suffolk,
UK

Neil Fligstein

PhD from University of California, Berkeley,
USA

Philippe Steiner

PhD from Université de Paris IV,
France

Richard Swedberg

PhD from Cornell University,
USA

Roberto Herranz González

PhD from Universidad de Santiago
de Compostela, Spain



Details and Study Plan

Schedule:
Evening Lectures

Participating Centres:
Economic Sociology (SOCIUS/CSG)

Start Date:
September

Tuition Fees:
€3,000 – 1st Year;
€2,000 - 2nd – 3rd Years;
€1,000 - 4th - 6th Years



year 1	Course Units	Professor	Credits	Semester
	Economic Sociology	-	7.5	1
	Work and Organisations	-	7.5	1
	Research Methods and Techniques	-	7.5	1
	Research Seminar I	-	7.5	1
	Topics and Debates about Economic Sociology	-	7.5	2
	Topics and Debates about Work and Organisations	-	7.5	2
	Elective	-	7.5	2
	Research Seminar II	-	7.5	2
year 2	Course Units	Professor	Credits	Semester
	Thesis (Research Seminar III)	-	60.0	-
year 3	Course Units	Professor	Credits	Semester
	Thesis (Research Seminar IV)	-	60.0	-

PhD in *Economic and Social History*

The PhD in Economic and Social History was created by the Universidade Técnica de Lisboa in 1991, and was subsequently adapted to the European Higher Education Area standards in 2009. It is a 3rd Cycle degree that aims to teach and produce original research in the field of economic and social history. The degree aims to train specialists who have a high capacity of interpretation and response to the economic and social transformations over time and in the interaction between the chronological, geographical and social aspects of these transformations.

Taught in Portuguese

Scientific Board

Nuno Valério (Coordinator)
Full Professor

Maria Paula Fontoura
Full Professor

Leonor Freire Costa
Associate Professor

Pedro Neves
Assistant Professor

Target

Those who want an advanced education and who wish to carry out research with the aim of working in a highly qualified position in the public sector, the private sector and the social economy sector, in the area of national and international development. Such positions include teaching and research, leadership and management of national and international organisations, consulting, training, research study and projects, journalism, planning, project development, and the design and evaluation of public policies and of social projects and policies.

Study Topics

The study topics are chosen from the following fields:

- > Economic History;
- > Business History;
- > Social History;
- > History of Economic Thought.

Entry Conditions And Selection Criteria

Graduates may be admitted to study for the PhD in Economic and Social History if they hold a Masters in fields of Social Sciences (Economics, Sociology, Management and Finance) or Arts and Humanities (History). Graduates who only hold a Bachelors in one of the these subjects may also apply, as long as they have a minimum grade of 16, or exceptionally a lower grade, together with a curriculum that proves an adequate scientific background or professional experience. The selection of candidates is made by the Scientific Board of the PhD Programme, based on the following criteria:

- > Masters and respective final grade;
- > Bachelors and respective final grade;
- > Scientific curriculum and relevant professional experience.

Study Methodology

A proposal regarding the research topic of the PhD thesis is presented by the candidate before an examination panel. After being accepted for the programme, a supervisor is appointed, to tutor the student during the in-depth preparation of their thesis project during the 1st Year. The thesis project is presented and discussed during the first-year Seminars. At the end of the 1st Year, a consolidated version of the thesis project is assessed by an examination panel appointed by the Programme Coordinator. The panel will confirm its recommendation and may suggest alterations, or recommend that the student discontinue their studies. If the thesis project is accepted, it is then registered and the name of the supervisor is confirmed. The process of preparing, researching and writing a thesis lasts for two academic years, according to the Rules and Regulations for ISEG PhD Programmes.

“

I understand that the evolution of a career must be accompanied by a continual improvement of one's academic education, especially as we live in a world where the labour market is becoming increasingly competitive. Thus, given my interest in issues related to the Economic and Social History of Portugal, in particular those relating to the 'Estado Novo', I chose to study for a PhD in this area. I chose the ISEG PhD in Economic and Social History, not only because of the indisputable experience and quality of its professors, but also on account of the fact that ISEG is the oldest and most traditional School of Economics in Portugal.”



Ricardo Ferraz

PhD in Economic and Social History
Economist



Faculty and Subject Areas

Amélia Branco

PhD ISEG, Universidade de Lisboa
Economic and Business History and
Quantitative Finance

Ana Bela Nunes

PhD ISEG, Universidade de Lisboa
Economic History

António Goucha Soares

PhD European University, Florence, Italy
European Law

Leonor Freire Costa

PhD ISEG, Universidade de Lisboa
Economic History, Maritime History and
Modern Age

Nuno Valério

PhD ISEG, Universidade de Lisboa
Economic History, History of Economic
Thought and Economic Systems

Pedro Neves

PhD ISEG, Universidade de Lisboa
Business History

Rita Martins de Sousa

PhD ISEG, Universidade de Lisboa
Monetary and Financial History and
Business History



Details and Study Plan

Schedule:
Evening Lectures

Participating Centres:
GHES – ECONOMIC AND SOCIAL HISTORY
RESEARCH UNIT

Start Date:
September

Tuition Fees:
€3,000 – 1st Year;
€2,000 – 2nd – 3rd Years;
€1,000 – 4th – 6th Years



year 1	Course Units	Professor	Credits	Semester
	Research Methodology	Nuno Valério	10	1
	Elective I	-	10	1
	Seminar I	Leonor Freire Costa	10	1
	Elective II	-	10	2
	Elective III	-	10	2
	Seminar III	Pedro Neves	10	2

year 2	Course Units	Professor	Credits	Semester
	Thesis (Research Seminar)	-	60.0	-

year 3	Course Units	Professor	Credits	Semester
	Thesis (Research Seminar)	-	60.0	-

elective I	Course Units	Credits	Semester
	Any course of PhD Programs of the ISEG	10	1

elective II	Course Units	Credits	Semester
	Any course of PhD Programs of the ISEG	10	1

PhD in *Economics*

Taught in English

Scientific Board

António Afonso (Coordinator)
Full Professor

Isabel Proença
Associate Professor

Joana Pais
Associate Professor

The main aim of the PhD in Economics is to provide advanced education in preparation for a position in a profession that demands a high level of technical and scientific qualification. It also allows pursuing an international career in Economics and in highly qualified roles in the public or private sector.

Target

Those who are looking for an advanced education and who wish to carry out research in Economics, in preparation for a highly qualified role in the public sector or private sector. Such a position includes university teaching and research, the leadership and management of national and international organizations, consulting, training, and research projects and studies.

Entry Conditions And Selection Criteria

Applications are welcome from graduates of the ISEG Masters in Economics, the Masters in Monetary and Financial Economics, or an equivalent Masters. Applicants who have a Masters or equivalent degree in another field may be admitted, but only after if they have successfully studied for a syllabus similar to the syllabus of the 1st Semester of the ISEG Masters in Economics. The selection of candidates is made by the Scientific Board of the PhD Programme, based on the following criteria:

- > Masters and respective final grade;
- > Bachelors and respective final grade;
- > Scientific curriculum and relevant professional experience.

Study Topics

For the PhD Programme in Economics, subjects of an economic nature are studied to an advanced level (Macro and Microeconomics), as well as their application, employing mathematical, statistical and econometric methods.

Study Methodology

At the end of the 1st Year of the programme, a consolidated version of the thesis project is assessed in the Research Seminar where alterations are suggested, and a supervisor is appointed from amongst the faculty. The processes of preparing, researching and writing a thesis lasts for two academic years, according to the Rules and Regulations for ISEG PhD Programmes. Topics of thesis can be typically related to the work of the teaching staff, who as published notably in top journals such as: *American Economic Review*; *European Economic Review*; *Experimental Economics*; *Games and Economic Behavior*; *Journal of Banking and Finance*; *Journal of Business & Economic Statistics*; *Journal of Econometrics*; *Journal of Economic Dynamics and Control*; *Journal of International Economics*; *Journal of International Money and Finance*; *Journal of Monetary Economics*; *Journal of Regional Science*; *Oxford Economic Papers*; *Public Choice*.

“

Studying at ISEG has definitely been one of the most fruitful experiences of my life, both academically and personally. I chose to do a PhD in Economics in the hope that I would expand my theoretical knowledge and also to acquire the skills to apply this theoretical knowledge in both a practical and conceptual framework and the program at ISEG has exceeded any expectations that I may have had when applying. My interest in studying the financial stability of Latin American countries led me to Portugal and the exceptional facilities, the experienced and diverse faculty as well as REM drew me to ISEG. As a PhD candidate, I am affiliated to REM and had the opportunity to contribute to one of the research centre's projects. Under the supervision of a senior professor and researcher, I have been able to produce three working papers to date. I have also had the opportunity to present my work at a number of conferences around Portugal as well in China. I indubitably recommend ISEG.



Zoë Venter

PhD Student

“

When I decided to do my PhD in Economics two aspects I valued the most were both the teaching staff and research quality of the institution I was applying. The teaching staff of the PhD in Economics at ISEG gathers some of the best experts in their fields that with their international experience are able to put its quality in the highest standards. For this reason the 1st academic year has been one of the most demanding I have faced as student. It has been allowing me to go beyond what I learnt at the master level and address current leading topics of economic research. Surely the knowledge of the Monetary and Financial Economics (also at ISEG) was a plus to keep track of all the new things I learnt. All of this is associated with a diversity of analytical tools, such as mathematics or econometrics, which certainty will be important for my research project. Yet in the 1st year we start to give the first steps towards our research project and since the beginning I feel that the professors are always able to listen our interests and give us support. Besides, we are encouraged to participate in several forums either to get in touch with current research or to discuss and present our work.



André Oliveira

Statistics Department, Banco de Portugal

Faculty and Subject Areas

António Afonso

PhD from ISEG, Universidade Técnica de Lisboa
Macroeconomics

Bernardino Adão

PhD from University of Minnesota, US
Macroeconomics

Jacinto Braga

PhD from University of Nottingham, UK
Microeconomics

Joana Pais

PhD from Universitat Autònoma de Barcelona, Spain
Microeconomics

José Pedro Pontes

PhD from ISEG, Universidade Técnica de Lisboa
Microeconomics

Luís Catão

PhD from University of Cambridge, UK
Macroeconomics

Luís Costa

PhD from York University, UK
Macroeconomics

Paulo Bastos

PhD from University of Nottingham, UK
Microeconomics

Paulo Brito

PhD from ISEG, Universidade Técnica de Lisboa
Macroeconomics

Paulo Parente

PhD from University of Warwick, UK
Econometrics

Sandra Gomes

PhD from ISEG, Universidade Técnica de Lisboa
Macroeconomics

Sandra Maximiano

PhD from University of Amsterdam, Netherlands
Microeconomics

Tanya Vianna de Araújo

PhD from ISEG, Universidade Técnica de Lisboa
Computational Economics and Complex Systems



Details and Study Plan

Schedule:
Evening Lectures

Participating Centres:
REM – Research in Economics and Mathematics (Economics, UECE; Applied Mathematics, CEMAPRE)

Start Date:
September

Tuition Fees:
€3,000 – 1st Year;
€2,000 – 2nd – 3rd Years;
€1,000 – 4th – 6th Years



year 1	Course Units	Professor	Credits	Semester
	Advanced Econometrics	Paulo Parente	7.5	1
	Advanced Economic Mathematics	Paulo Brito	7.5	1
	Advanced Macroeconomics	Pailo Brito, Bernardino Adão, António Afonso	7.5	1
	Advanced Microeconomics	Jacinto Braga, Pedro Pontes	7.5	1
	Macroeconomic Topics	Luís Costa, Sandra Gomes, António Afonso	7.5	2
	Microeconomic Topics	Pedro Pontes	7.5	2
	Seminar	António Afonso	7.5	2
	Elective	-	7.5	2
	Computational Economics	Tânia Vianna De Araújo	7.5	2
	Applied Economics	Susana Santos	7.5	2
	Experimental Economic	Sandra Maximiano	7.5	2
year 2	Course Units	Professor	Credits	Semester
	Thesis (Research Seminar)	-	60.0	-
year 3	Course Units	Professor	Credits	Semester
	Thesis (Research Seminar)	-	60.0	-

PhD in *Management*

Taught in Portuguese

Scientific Board

—
Vitor da Conceição Gonçalves
(Coordinator)
Full Professor

Carlos Costa
Associate Professor

Maria João Guedes
Senior Assistant Professor

Nuno Crespo
Assistant Professor

The PhD in Management aims to provide PhD students with a deep understanding of the problems of Management and a solid education in the methods and techniques for applied research in Management.

Target

—
The PhD in Management is of particular interest for those who want to pursue an academic career in higher education and who want to carry out advanced research in management in public or private organisations.

Study Topics

—
The main fields of research for the PhD in Management are: Organisational Behaviour, Human Resources, Finance, Accounting, Information Systems, Operations Management, Strategy and Marketing.

Study Methodology

—
The PhD student must register their thesis project during the 2nd Year of the PhD Programme, summarising the research topic and the name of the intended supervisor. To register their thesis project, the student must have obtained at least 40 credits in course units. The thesis project must be submitted for defence until the end of the 2nd Year and be defended by the beginning of the 3rd Year. The thesis project is an important part of the research work. The project should include:

- > The definition of the research question;
- > A revision of the relevant literature;
- > The strategy for the subsequent research, including the techniques for the collection and analysis of the data to be used;
- > A chronogram of the work already done, and yet to be carried out.

Upon receipt of the thesis project, the Programme Coordinator will appoint an examination panel that will assess the project and its respective presentation and defence. Having assessed the project, the examination panel emits its opinion about the thesis and may suggest amendments and a possible re-submission of the project, or even recommend its discontinuation. In addition to the thesis project, the PhD student should also make a presentation about the current state of their research during the course of the study programme. This communication will take place during the second year of the programme, during one of the seminars which are regularly organised by the Department of Management, and has to be booked by the PhD student with the Department of Management Office.

Entry Conditions And Selection Criteria

—
The following are welcome to apply to study for a PhD in Management:
> Graduates with a Masters, or equivalent;
> Graduates with a Bachelors degree who have an especially relevant academic scientific curriculum which recognises their capacity to study for this study cycle.

Applications are made online and have to include, amongst other documents:
> Bachelors and Masters degree certificates;
> A thesis project proposal of up to 2,000 words;
> C.V.

“

ISEG PhD in Management is a solid investment, leveraged by experienced teachers and fantastic facilities. If you are bold to begin this journey, a lot of work awaits you, but the right guidance will help you achieve excellence.



Carlos Cabeleira

PhD in Management, 2017
Innovation Manager and Policy Expert, Lisbon, Portugal

“

As an accounting professor, the PhD at ISEG provided me great tools to develop my research capabilities, mainly in terms of methodologies. Adding to it, the PhD provided me the possibility to be integrated in a recognized research center - ADVANCE, that is helping me to further boost my research.



Daniela Penela

PhD in Management, 2018
Invited Assistant Professor at ISCTE-IUL, Lisbon, Portugal

International Partners

The PhD in Management counts on the collaboration of professors and researchers from various European and North American universities. The membership of the Lisbon School of Economics and Management of the Academic Council of EIASM (the European Institute for Advanced Studies in Management) in Brussels enables our PhD students to participate in subsidised short international seminars that are specifically designed for PhD students. These seminars are well-known for their quality and they are a great help for PhD students. PhD students can also carry out part of their studies at foreign universities by means of the various exchange agreements with ISEG.



Faculty and Subject Areas

Amélia Bastos
PhD from ISEG, Technical University of Lisbon
Statistics

Ana Isabel Morais
PhD from ISCTE-IUL
Accounting

António Palma dos Reis
PhD from University of Wisconsin, USA
Information Systems

António Samagaio
PhD from ISEG, University of Lisbon
Accounting

Carla Curado
PhD from ISEG, Technical University of Lisbon
Human Resources Management and Organisational Behaviour

Clara Raposo
PhD from London Business School, UK
Finance

Cristina Gaio Silva
PhD from ISCTE-IUL
Accounting

Cristina Sales Baptista
PhD from Luleå University of Technology, Sweden
Marketing and Strategy

Eduarda Soares
PhD from University of Tilburg, Netherlands
Human Resources Management and Organisational Behaviour

Graça Silva
PhD from Nova University of Lisbon
Operations Management

Gurpreet Dhillon
PhD from London School of Economics, UK
Information Systems

Helena Gonçalves
PhD from ISEG, Technical University of Lisbon
Marketing and Strategy

Helena Jerónimo
PhD from University of Cambridge, UK
Human Resources Management and Organisational Behaviour

Inês Pinto
PhD from ISEG, University of Lisbon
Accounting

Isabel Proença
PhD from Université Catholique de Louvain, Belgium
Mathematics

João Carvalho das Neves
PhD from Manchester Business School, UK
Finance

João Mota
PhD from Porto University
Marketing and Strategy

João Duque
PhD from Manchester Business School, UK
Finance

João Novais Santos
PhD from ISEG, University of Lisbon
Marketing and Strategy

Jorge Gomes
PhD from Manchester Business School, UK
Human Resources Management and Organisational Behaviour

José Augusto Felício
PhD from ISEG, Technical University of Lisbon
Marketing and Strategy

José Azevedo Pereira
PhD from Manchester Business School, UK
Finance

José Veríssimo
PhD from Manchester Business School, UK
Marketing and Strategy

Luís Gonçalves-Pinto
PhD from University of Southern California, USA
Finance

Maria João Guedes
PhD from Imperial College, UK
Accounting

Margarida Duarte
PhD from Manchester Business School, UK
Marketing and Strategy

Mário Caldeira
PhD from Cranfield School of Management, UK
Management and Information Systems

Nuno Fernandes Crespo
PhD from ISEG, University of Lisbon
Marketing and Strategy

Paulo Lopes Henriques
PhD from ISEG, Technical University of Lisbon
Human Resources Management and Organisational Behaviour

Pilar Conde
PhD from ISEG, University of Lisbon
Human Resources Management and Organisational Behaviour

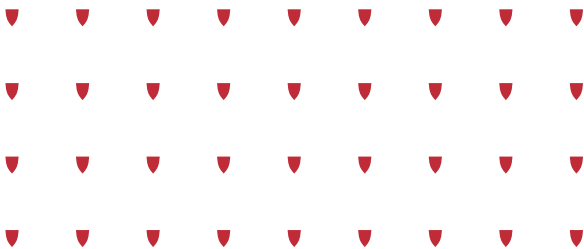
Raquel Gaspar
PhD from Stockholm School of Economics, Sweden
Finance

Rui Brites
PhD from ISCTE-IUL
Techniques for Management Research

Sofia Lourenço
PhD from Harvard Business School, USA
Accounting

Tiago Gonçalves
PhD from ISEG, University of Lisbon
Accounting

Vítor da Conceição Gonçalves
PhD from University of Seville, Spain
Marketing and Strategy



Details and Study Plan

Schedule:
Evening Lectures

Participating Centres:
Management (ADVANCE),
Economics (UECE) and
Applied Mathematics
(CEMAPRE)

Start Date:
September

Tuition Fees:
€3,000 – 1st Year;
€2,000 – 2nd – 3rd Years;
€1,000 – 4th – 6th Years

year 1	Course Units	Professor	Credits	Semester
	Probability And Statistics Topics	Amélia Bastos	10	1
	Research Methodology	Carla Curado	10	1
	Elective I	-	10	1
	Elective II	-	7.5	2
	Elective III	-	7.5	2
	Elective IV	-	7.5	2
	Elective V	-	7.5	2

year 2	Course Units	Professor	Credits	Semester
	Thesis (Research Seminar)	-	60.0	-

year 3	Course Units	Professor	Credits	Semester
	Thesis (Research Seminar)	-	60.0	-

elective I	Course Units	Professor	Credits	Semester
	Topics In Strategic Management	Vitor Da Conceição Gonçalves	10	1

elective II to V	Course Units	Professor	Credits	Semester
	Organizational Behaviour	Paulo Lopes Henriques	7.5	2
	Information Systems Research Strategies	Mário Caldeira	4	2
	Corporate Finance	João Carvalho das Neves	7.5	2
	Accounting Research	Sofia Lourenço/ Maria João Guedes Cristina Gaio Silva	7.5	2
	Investments And Financial Markets	Luís Gonçalves-pinto	7.5	2
	Applied Techniques For Research In Management	Isabel Proença/ Rui Brites	7.5	2
	Marketing Theory And Research	João Mota	7.5	2
	Research Topics For Information Systems	António Palma Dos Reis	3.5	2
	Research Seminar	Margarida Duarte	8	2

PhD in *Partnership*



Sustainable Energy Systems

This PhD is offered in partnership with Instituto Superior Técnico (IST) and Lisbon School of Economics and Management (ISEG), together with the participation of Massachusetts Institute of Technology (MIT), as part of the MIT–Portugal Programme.

The model of integrated education in Engineering and Economics, which is offered as a joint venture between Instituto Superior Técnico (IST) and ISEG - Lisbon School of Economics and Management, is distinguished by the educational stimulation of students, with the aim of creating new leaders who are able to develop and implement innovative strategies for sustainable energy systems development in real-life situations. The curriculum of the PhD in SSE enables these competitive advantages through curricular activities and rigorous research, which is taught by internationally-recognised faculty, including those from Massachusetts Institute of Technology, under the MIT-Portugal Programme, as well as the introduction of innovative learning methods.

Objectives

- Create knowledge based on state-of-the-art R&D in several fields, promoting the development of innovative products and also the integration of technologies under the framework of sustainable energy systems;
- Promote new forms of interaction between universities and companies, government and society, for the identification and sustainable implementation of new energy policies, science and technology and innovation.

Sustainability Science

REASOn | REsources, Food and Society

The challenges which society faces are complex and multidimensional, leading to new paradigms associated with sustainable development. To be promoters of change, the 21st century professionals must be endowed with solid scientific knowledge and, most importantly, must hold the capacity to incorporate it in order to understand the interactions between global, natural, social and human systems, and how such interactions affect the sustainability contests. Building this new scientific area requires assimilation of knowledge and mastery of tools that are seldom addressed by individual disciplines and scientific areas with an integrated approach. Today, disciplinary science deeply contributes to understand the function of the various pieces that make up our world but has gaps in understanding how these parts relate to each other.

The Universidade de Lisboa PhD programme in Sustainability Science addresses this challenge by offering: an innovative program which seeks interdisciplinarity, the application of science to real problems, and the integration of knowledge and innovation with the participation of society and citizens.

The goal of this PhD programme is to promote excellent and internationally competitive advanced training, transversely integrating solid and up-to-date knowledge for sustainable development.

Sociology

An inter-university programme offered by Universidade de Lisboa (ICS, ISCSP and ISEG), Universidade Nova de Lisboa, Universidade de Évora and Universidade do Algarve.

This PhD benefits from the theoretical and empirical heritage accumulated through the history of sociology, and it also develops a new direction in the face of the critical challenges of contemporary society. These are mirrored in the title and the chosen keywords.

“Open” societies are replacing the social frameworks of the past in new and unpredictable ways, by combining the local and the global, the national and the international, private and public, practices and values, and individual biographies and collective standards, which have upset integrating contexts that existed before and require new ones.

“Inclusive” societies emphasise the role of social institutions, territorial regions, groups and networks (both formal and informal) in the cohesion of a fragile, divided and heterogeneous social fabric. This overview can be broken down into more specific goals and themes, whose nature and contours are addressed throughout the programme, namely: public policy and social innovation; mobility, life projects and social dynamics; science, reflexivity and knowledge transfer; structure, institutions and inequalities.

Political Economy

The interdisciplinary PhD in Political Economy provides the opportunity to acquire advanced training in the investigation of contemporary capitalist systems. In line with several international trends in the social sciences, the program encourages critical and plural study on systems current socio-economic conditions.

Capitalism is a socio-economic and power system; a diversified system throughout and in each moment of its history; a changing system in its institutional frameworks and scales. Critically studying capitalism is the main objective of the interdisciplinary PhD in Political Economy, in line with a relevant international trend in the social sciences.

This program particularly values the creation of knowledge about capitalism in Portugal and its evolution, inserting it in the European and global contexts that have shaped and shape its trajectories of convergence and divergence. The PhD in Political Economy took shape from research projects, relevant publications, advanced training experience and a long journey of joint work developed at different levels.

The PhD in Political Economy results from a partnership between the following university institutions:

- ISCTE - Lisbon University Institute (ISCTE-IUL);
- Faculty of Economics, University of Coimbra (FEUC);
- Lisbon School of Economics and Management, University of Lisbon (ISEG-UL).

Useful Information

Admission

Applications for all the PhD Programmes at ISEG are online. The deadline for the 2020/21 intake is April 30, but you are advised to apply before February 29, especially if you need a STUDENT VISA. We require a solid academic background in Mathematical Analysis and Statistics. This normally implies holding a bachelor's degree in Mathematics, Mathematics with Economics or Statistics, and some of the bachelor's degrees in Economics, Finance or Management. Applicants from other academic disciplines will be considered on a case-by-case basis. Accepted applicants have normally achieved a minimum of 14 out of 20 points in the Portuguese system or a 2:1 honours in the British system (or equivalent, e.g. G.P.A. 3.0). Candidates are selected according to their BSc grade, their CV details and possibly an interview. If you are in the last year of studies for your BSc, you may apply on the basis of your predicted grade and your application will be considered for a conditional offer.

Student Visa

If you are not an EU, EEA or Swiss citizen, then you need a Student VISA. After you have definitely decided joining the Masters and have paid the registration fee to secure your place, you will be able to download the acceptance letter on Aquila Portal, which you need to apply for a Study Visa. At this stage, you should contact the nearest Portuguese Consulate or Embassy, in your country, to find out which other documents are necessary. If there is no Portuguese Consulate or Embassy in your country, ISEG will let you know where to apply. We advise all students entering in Portugal with a visa to book an appointment with Helena Cardoso, from the ISEG Masters & PhD Office, on the first working day after their arrival in Portugal. Helena will help you with the first contact with SEF – the Immigration Authority. This is particularly urgent if your passport was not stamped upon arrival in Portugal.

Application

Step 1

Fill out the online application form. You will need to attach some digitalized documents: photo, ID document (passport if you require a Student Visa), bachelor's degree certificate, academic transcript of records and CV, and you must also pay the application fee. You may submit these documents later on, and/or pay the application fee by logging on to our site, using the username and password that were previously supplied by us via E-mail. Your application will be considered valid only after all documents have been submitted and the application fee has been paid. Payment can be made in three ways: by ATM — only if you hold a Portuguese Bank Account, by Bank Transfer or by Paypal — if you live outside Portugal. Please note that you do not need to have a Paypal account, you just need to have a credit card that is accepted by Paypal. If payment is made by Bank Transfer, then you need to send proof to smd@iseg.ulisboa.pt

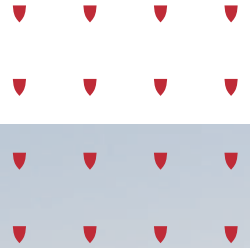
Step 2

After your application has been validated, it will then be analyzed by ISEG (you may be contacted at this stage by the Programme Directors). Next you will receive an E-mail after a decision has been made.

Step 3

If you are accepted, and to secure a place for the PhD programmes, you are given a deadline for acceptance (this is done online) and for the payment of a non-refundable registration fee. This can be done in the same way as the application fee.





Around *Lisbon*

Lisbon is one of the most attractive cities to live in Europe and it boasts a good quality of living, where the past and the future meet, under long hours of brilliant sunlight and a beautiful moon.

10 reasons to **study and live in Lisbon**

01

A cosmopolitan and multicultural city, well-served by public transport, whose city centre is 15 minutes' journey from the airport and less than 3 hours from most European capitals.

02

A green city, with lots of gardens and parks, offering great opportunities for outdoor activities and sports.

03

Bordered by the Tagus River and situated near fantastic beaches ideal for watersports, such as sailing and surfing, that can be practiced all year long, on account of the mild climate and 4 to 5 months of high summer temperatures.

04

A historic city, former capital of the Portuguese Empire from the 14th to the 19th Centuries, with many fine monuments and museums that conserve the memory of the material and cultural wealth of that period.

05

A European hub for contemporary art and design, hosting important artistic events all year long.

06

A safe city.

07

Offers a wide range of gastronomic choices, with different types of ethnic cooking. Portuguese food is typically Mediterranean and is very natural and healthy, with an abundance of fresh fish, vegetables, fruit, rice and olive oil.

08

An affordable city, with lower living costs than most European cities, including Madrid, Barcelona, London and Paris. Typical monthly costs for students are: €450 for lodging, €250 for meals and €40 for public transport.

09

Universidade de Lisboa is the biggest university in Portugal and tuition fees are very competitive when compared with other European universities of a similar quality.

10

Universidade de Lisboa attracts a lot of foreign students from Portuguese-speaking countries and also from other European countries. Networking is an important benefit from studying at ISEG, Universidade de Lisboa.



Monthly Expenses

Accommodation	600€ / 700€
Meals	200€ / 250€
Transport	35€ / 40 €
Leisure	100€ / 120€
University (books, etc..)	50€
TOTAL	985€ / 1160€

The cost of living in Portugal is lower than in most EU countries.
The prices of some everyday articles.



Articles

1 Coffee	0.65€
1 Coke (33cl)	1.20€
Water Bottle 50cl (Cafeteria)	1.00€
Cinema admission	6.00€
Daily newspaper	1.50€

Full meal in a middle class restaurant	15.00€
Meal at the school canteen (includes drink, soup, dish and desert)	2.40€
Subway ticket	1.45€
Carris bus ticket	2.00€
Photocopy (A4 size)	0.05€

The prices may be subject to change

How to get to ISEG from the Airport

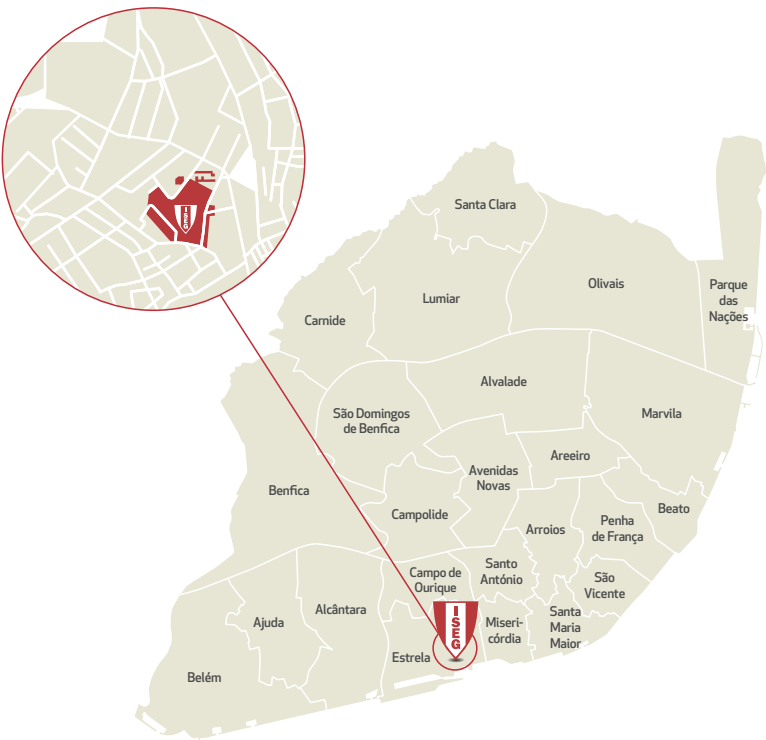
Lisbon is just a few hours away from North America (about 6 to 8 hours) and 2 to 3 hours from most European cities. Lisbon's international airport (Aeroporto Humberto Delgado) is only 7km away from the city centre.

Carris Bus

744 - 727	Av. D. Carlos I 1 minute by foot
744 - 773	Lapa 5 minutes by foot
744 - 738	Estrela 5 minutes by foot

Subway

The Red Line, with exit at Saldanha, then you catch
The Yellow Line, with exit at Estação do Rato (15 minutes by foot to ISEG).





ISEG *campus*

ISEG Library

The ISEG library is situated in a five floor building with large reading/study rooms and the largest collection of works in the field of Economics and Business in Portugal. Students also have access to several bibliographic databases with statistical information on the latest academic research, and are also able to consult various case studies for free, with extended opening hours. Equally important are the partnerships in the open knowledge access that have been established with other top level libraries and institutions, such as the European Union Documental Centre and the American Corner, in partnership with the American Embassy in Portugal.

Scientific Repository at ISEG with 3,480 documents (Theses, Papers, Working Documents, etc.)

78,085

Books

70

E-Books

90

Scientific
Journals

42

Databases

B-ON

Online
Library

31,498

Working
documents

17,161

Journals
and Books
from various fields
of knowledge

ISEG Bookshop

In the ISEG bookshop, books and other bibliographies are on sale to support courses taught at the School. Other support services exist, such as: a copy centre, printing facilities and wifi access, amongst others.

ISEG Study Space

ISEG provides PhD students with a study space in one of the buildings of the Campus, with extended opening hours 7 days a week.

All the lecture rooms and communal areas have computer equipment. The Eduroam wifi network is available throughout the School.

ISEG Restaurants

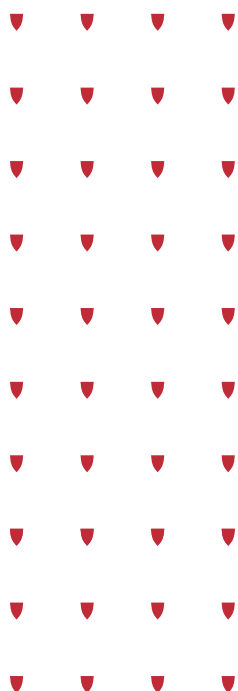
At ISEG you can find a wide range of restaurants (the University refectory, a restaurant, 3 snack-bars, and various vending machines).

Nereus Network

The Nereus network is an international network of libraries, policy makers, information specialists, researchers and ICT specialists. The partners of this network have access to the most advanced developments in Europe in terms of information management. Being a member of this network enables access to a common platform for addressing challenges such as the development of institutional repositories and the management of access to them.

ISEG Car Parks

The ISEG Campus has two car parks with about 300 spaces. Parking is free for all PhD students.



U LISBOA | UNIVERSIDADE
DE LISBOA



**LISBON
SCHOOL OF
ECONOMICS &
MANAGEMENT**
UNIVERSIDADE DE LISBOA



RUA DO QUELHAS, 6, 1200-781 LISBOA | PORTUGAL
(+351) 213 925 800

—
WWW.ISEG.ULISBOA.PT

INTERNATIONAL ACCREDITATIONS AND PARTNERSHIPS



MEMBER

