

PhD *Programmes*

Open minds for a better world

www.iseg.ulisboa.pt



Index

03 **Welcome to ISEG**

06 **Why ISEG**

08 **The PhD Experience**

10 **Research at ISEG**

PhD Programmes

12 Applied Mathematics for Economics and Management

16 Development Studies

20 Economic and Organisational Sociology

24 Economic and Social History

28 Economics

32 Management

36 **PhD Programmes in Partnership**

Political Economy

Sociology

Sustainability Science

Sustainable Energy Systems

38 **Useful Information**

Welcome to ***ISEG Lisbon***

At ISEG you will find an environment that is supportive of research, with a friendly atmosphere of sharing and interaction between faculty, researchers and PhD students. We bring together all the necessary means and resources to carry out advanced research in the most cutting-edge research topics. Furthermore, a comprehensive programme of seminars and conferences takes place throughout the year, which you can attend, selectively choosing according to your interests.

We thank you for your interest in our PhD Programmes, which cover different areas of specialization, each targeting a special profile of student. Hopefully we will meet you soon here in Lisbon! But, first, let us highlight three good reasons to choose ISEG for your PhD:



Clara Raposo

Dean of ISEG
Full Professor of Finance

Manuel Mira Godinho

Associate Dean for Research of ISEG
Full Professor of Economics



01.

An Experience at the Leading Edge of Knowledge

Unlike all other academic degrees, the main objective of a PhD is to produce new knowledge – in original research which is relevant to society and respected by the scientific community. In our school you will find members of faculty who are producing world-class research that is published in top international journals – our PhD students are also expected to present their work at reputed international conferences and publish in high quality scientific journals or in edited books. This is already happening, and you can be next!

02.

Learning Advanced Skills

Whether from a more theoretical or from a more applied perspective, a PhD thesis should involve knowledge which is relevant to the economy and society as a whole. In any case, it must incorporate advanced research techniques and methodologies.

With several decades' experience in educating PhD students, at ISEG we know how to identify and develop the critical skills required by these students: analytical skills, technical skills, confidence to be creative, and even softer skills associated with effective communication.

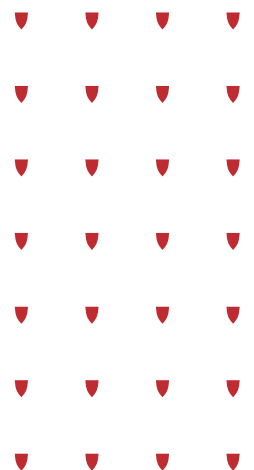
Many of our PhD alumni play important roles in academia and in the public and private sectors, as well as in the social economy area.

03.

Excellent Faculty and Graduates

The scientific research carried out by our research units provides an essential support for our offer of PhD Programmes. Based on many consecutive years of experience, ISEG is the School of Economics and Management that produces the largest volume of scientific publication in refereed academic journals (WoS, SCOPUS) in its scientific areas in Portugal.

The “António Simões Lopes prize”, for the best PhD thesis in the field of Economics carried out in Portuguese universities, was first awarded to Sara Proença for her PhD thesis at ISEG in the field of energy. This prize is sponsored by the Order of Economists, in partnership with PwC. Again in 2020 it was awarded to a PhD thesis from our school (Jorge Faria Silva).



ISEG's mission is to create, share and enhance the socio-economic value of knowledge and culture in the fields of Economics, Finance and Business, through an approach based on plurality, the guarantee of freedom of intellectual and scientific expression, and respect for ethical principles and social responsibility.

ISEG regularly hosts world class researchers, such as Nobel Prize winners Jean Tirole (2018), Alvin Roth (2018-2019) and Eric Maskin (2019).



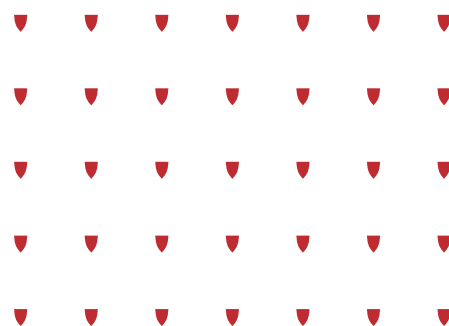
Why ***ISEG Lisbon?***

ISEG is the oldest School of Economics and Management in Portugal, with a tradition of over 100 years in educating the Portuguese business and technical elite. With an experienced and well-prepared faculty, ISEG is also recognised for the extraordinary spirit of mutual understanding that is cultivated between its students and faculty. With an ever-increasing focus on internationalisation, ISEG offers a number of programmes taught in English, including three Bachelors degrees and nine Masters, which attract more international students each year.

ISEG offers eight PhD Programmes, six in key fields of study, and another four in partnership with other universities.

A PhD enables students to learn up to the limits of knowledge in an academic environment where research experiences are shared, and ideas and methods are discussed, and where you can always find someone who has interests in common. This is what ISEG has to offer in its PhD Programmes.

Find out about these topics – and much more – in this brochure, or at [**iseg.ulisboa.pt**](http://iseg.ulisboa.pt)



10 reasons why ISEG Lisbon

02

ISEG is a School of the Universidade de Lisboa, a leading university, as recognized, by the selective Shanghai ranking (ARWU).

05

ISEG's high quality research centres are engaged in a diverse array of international research projects.

08

ISEG's students and faculty win awards and recognition for best case studies, best dissertation and research output, and applied projects.

03

As part of the Universidade de Lisboa, ISEG belongs to UNITE! – University Network for Innovation, Technology and Engineering – a network that aims to foster cooperation between higher education institutions in Europe.

06

ISEG has a large, diversified, global network of talented alumni.

09

ISEG is committed to the United Nation's Sustainable Development Goals (SDGs) for 2030.

01

ISEG is accredited by AACSB, a distinction earned by only 5% of business schools in the world.

04

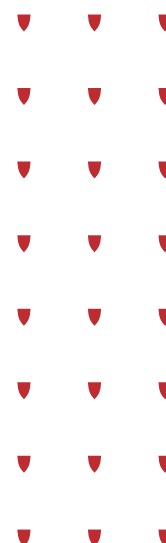
ISEG is located in downtown Lisbon, a vibrant, multi-cultural, cosmopolitan, and sunny European city.

07

ISEG students are highly sought after by top employers in government, private industry, and higher education around the world.

10

ISEG students benefit from a collegiate and open-minded atmosphere with many opportunities to interact with their peers and with faculty.



KEY FACTS

*Universidade
de Lisboa*

18

*Schools and
Faculties*

120

*PhD
Programmes*

882

*PhD
Students*

1st

*place among
portuguese
universities in the
2019 SCIMAGO
Research ranking
and the CWUR
ranking*

ISEG

243

*Members
of Faculty*

109

Years old

+140

*Exchange
agreements with
other universities*

289

*Current
PhD
students*

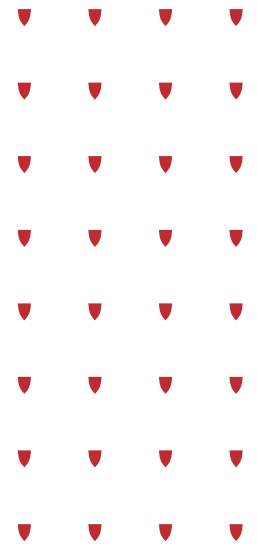
2

*Research units that
are fully accredited
by the national
research council,
FCT*

10

*PhD
Programmes,
including 5 in
partnership with
other
universities*

PhD *experience*



A PhD is designed for those who wish to carry out original research, contributing to the education of leaders in the field of research-based scientific innovation, and also for those who wish to deepen their knowledge.

Necessary Skills

01.

Confidence and
determination

02.

Integrity and responsibility

03.

Good written and oral
communication

04.

A liking for research and
the analysis of information

05.

Good time management
and discipline

06.

A strong motivation
to carry out research

07.

Analytical capacity

08.

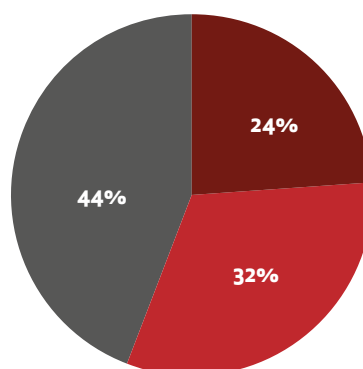
Autonomy and capacity for
decision-making

09.

Leadership capacity

Profile of ISEG's PhD Students*

Academic Background



24%
Economics

32%
Management / Finance

44%
Other

Age Bracket

25 - 45

Gender Distribution



63%



37%

**Based on the number of PhD students enrolled at ISEG between 2016-2019.



Research *at ISEG*

Scientific research is one of the key functions of any university, and thus it plays a fundamental role in the life of ISEG.

ISEG has more than 150 full-time faculty with a PhD, most of whom are integrated in the research centres which are accredited by FCT - Fundação para a Ciência e a Tecnologia, the national Research Council in the fields of Economics, Management, Applied Mathematics for Economics and Management, Social and Economic History, Economic and Organisational Sociology and Law.

Applicants for the School's PhDs can apply for a variety of scholarships, namely: ULisboa scholarships and FCT scholarships. The criteria, rules and regulations for applying for scholarships are detailed on our website.

ISEG researchers publish in leading scientific journals in their respective fields of study, particularly in the areas of Economics and Management. ISEG publishes two international scientific journals: The Portuguese Economic Journal, and The European Journal of Management Studies.

To assure an environment which is conducive to research, ISEG provides an information and documentation service at the Francisco Pereira de Moura Library, where a large and valuable collection of documents is available for consultation, in the most diverse forms of support (paper and digital), thus allowing for both on-site and online consultation.

At the ISEG Library, users can electronically access bibliographic databases and statistical information, as well as online journals.

With regards to the digital library, several types of databases can be consulted free-of-charge by PhD students, namely: B.On, DOAJ, ISI Proceedings, Stor, Proquest Scopus, PorData, Bankscope, as well as various numerical databases, such as Bloomberg, Amadeus, Informa D&B, and others.

Students can also access software programmes such as SPSS, Eviews and Stata for free.



Research Units hosted at ISEG

The areas of expertise of ISEG's research units cover all the scientific fields of study of the School. ISEG hosts two research consortia which are evaluated by the FCT (Fundação para a Ciência e a Tecnologia) as Very Good:

CSG

Research in Social Sciences and Management

CSG is a consortium created in 2013 which aggregates four research units in the fields of Economic Sociology, Economic History, Development Studies and Management:

- **ADVANCE** - Centre for Advanced Research in Management of ISEG
- **CeSA** - Centre for African, Asian and Latin American Studies
- **GHEs** - Centre for Economic and Social History
- **SOCIUS** - Centre for Research in Economic and Organisational Sociology

REM

Research in Economics and Mathematics

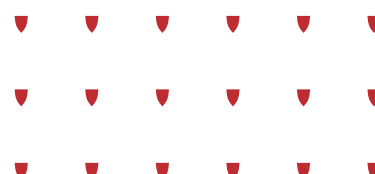
REM is a consortium created in 2017 which aggregates two research centres in the fields of Economics and Mathematics:

- **UECE** - Research Unit on Complexity and Economics
- **CEMAPRE** - Applied Mathematics for Forecasting and Economic Decision

Both consortia support the experimental infrastructure XLAB - Behavioural Research Lab.



CENTRO DE INVESTIGAÇÃO EM SOCIOLOGIA
ECONÓMICA E DAS ORGANIZAÇÕES



PhD in *Applied Mathematics* for *Economics* and *Management*

This programme prepares students to carry out research work worthy of publication in scientific journals with a peer-review system. It aims to develop the skills required to devise and implement new mathematical methods that can be used to tackle problems in the areas of Economics and Management.

Taught in English

Scientific Committee

M. Teresa Chaves De Almeida
(Coordinator)
Full Professor

Filipe Serra De Oliveira
Senior Associate Professor

Nuno Sobreira
Assistant Professor

Target

The PhD Programme in MAEG (Applied Mathematics for Economics and Management) is designed to meet the needs of those who wish to enhance their knowledge of mathematical methods and techniques in order to make original contributions in a particular field or to develop and implement solutions for problems in the areas of Economics and Management.

Entry Conditions and Selection Criteria

The entry requirements are a MSc or BSc degree (with a curriculum of four years or more) in Mathematics, Statistics, Economics, Finance, Management, Physics or Engineering. The degree syllabus and the grade obtained must provide evidence that the applicant has a strong background in Mathematics. Applicants who have not yet completed their degree may be accepted conditionally if they expect to do so before the start of the programme. Applicants who do not hold any of the degrees listed above may also be eligible for admission, provided that the curriculum is deemed suitable for the programme.

Study Topics

The research topics are the following:

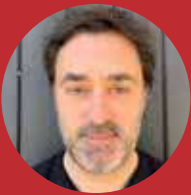
- > Actuarial Science;
- > Dynamical Systems;
- > Financial Econometrics;
- > Financial Mathematics;
- > Macro and Micro-econometrics;
- > Mathematical Analysis;
- > Operational Research;
- > Statistics;
- > Time Series.

Programme Structure

The PhD Programme takes three years to complete. The first year is devoted to coursework, and includes the preparation, presentation and viva voce defence of the thesis research project by the student before an examination panel. Please note that if any non-Portuguese speakers are enrolled for the Programme, then lectures will be taught in English. The next two years are dedicated to research, leading to the design, writing and defence of an original dissertation in an area of Applied Mathematics for Economics, or Management.

“

I believe Quantitative methods, and in particular Operational Research, can provide extremely valuable management decision systems for any organization. Pursuing a new direction in my professional career I decided to return to ISEG and enrol in the MAEG PhD programme looking to enrich and develop my skills in that scientific field. My objective was fully met. From the excellence lecturing faculty, supervisors, teaching and research resources through the material and administrative supporting conditions, the MAEG PhD ISEG programme delivered everything I was expecting. I strongly recommend it to anyone interested.



Carlos Martins

Director of Create Business LDA.

“

The MAEG PhD programme was an extremely enriching experience in personal, academic and professional terms. As I have an academic background in Mathematics and Statistics, studying for this PhD programme enabled me to explore a new, more applied area of research, developing knowledge and methodologies in an area as all-important as Finance. It is worth mentioning the quality of teaching and supervision provided by faculty throughout the programme, the environment for sharing experiences and knowledge, the motivation to participate in seminars and conferences, resulted in installing in all of us a critical spirit and constant questioning, which enabled us to grow as researchers and academics. It was a challenge that will certainly mark the rest of my life.



Liliana Pereira

Visitant Assistant Professor at the Higher Professional Technical School of the Polytechnic Institute of Cávado e Ave



Faculty and Subject Areas

Alexandra Moura

PhD Politecnico di Milano, Italy
Numerical Analysis, Statistics, and Actuarial Sciences

Alfredo Egídio dos Reis

PhD Heriot-Watt University, Edinburgh, UK
Actuarial Science

Amélia Bastos

PhD Universidade Técnica de Lisboa
Economics and Statistics

Ana Margarida Neto

PhD Faculdade de Ciências, Universidade de Lisboa
Mathematics – Algebra

Artur da Silva Lopes

PhD ISEG, Universidade Técnica de Lisboa
Macroeconometrics

Carlos Oliveira

PhD Instituto Superior Técnico, Universidade de Lisboa
Stochastic Optimisation

Esmeralda Arranhado Ramalho

PhD University of Bristol, UK
Econometrics, Microeconometrics

Fernando Gonçalves

PhD University of Edinburgh, UK
Mathematical Finance and Numerical Analysis

Filipa Duarte de Carvalho

PhD ISEG, Universidade Técnica de Lisboa
Operational Research

Filipe Serra de Oliveira

PhD Université Paris-Orsay, France
Partial Differential Equations

Graça Leão Fernandes

PhD ISEG, Universidade Técnica de Lisboa
Economics of Education

Isabel Preença

PhD Université Catholique de Louvain, Belgium
Applied Micro-econometrics and Panel Data

João Andrade e Silva

PhD ISEG, Universidade Técnica de Lisboa
Actuarial Science

João Guerra

PhD Universidad de Barcelona, Spain
Stochastic Analysis and Mathematical Finance

João Janela

PhD Instituto Superior Técnico, Universidade Técnica de Lisboa
Numerical Analysis

João Lopes Dias

PhD Cambridge University, UK
Dynamical Systems

João Nicolau

PhD ISEG, Universidade Técnica de Lisboa
Financial Econometrics

Jorge Caiado

PhD ISEG, Universidade Técnica de Lisboa
Econometrics and Forecasting

José Passos

PhD University of Bristol, UK
Micro-econometrics

José Pedro Gaivão

PhD University of Warwick, UK
Dynamical Systems

Leonor Santiago Pinto

PhD ISEG, Universidade Técnica de Lisboa
Operational Research

Lígia Amado

PhD ISEG, Universidade Técnica de Lisboa
Operational Research

Manuel Castro Guerra

PhD Universidade de Aveiro
Optimisation and Control Theory

Margarida Moz

PhD ISEG, Universidade Técnica de Lisboa
Operational Research

Margarida Vaz Pato

PhD Faculdade de Ciências, Universidade de Lisboa
Operational Research

Maria Cândida Mourão

PhD ISEG, Universidade Técnica de Lisboa
Operational Research

Maria de Fátima Fabião

PhD ISEG, Universidade Técnica de Lisboa
Mathematical Finance and Differential Equations

Maria Do Rosário Grossinho

PhD Faculdade de Ciências, Universidade de Lisboa
Mathematical Finance and Differential Equations

Maria Teresa Almeida

PhD London School of Economics, University of London, UK
Operational Research

Nicoletta Rosati

PhD Università di Padova, Italy
Econometrics and Panel Data

Nuno Crato

PhD University of Delaware, USA
Econometrics and Time Series

Nuno Sobreira

PhD Universidade Nova de Lisboa
Econometrics and Time Series

Onofre Simões

PhD ISEG, Universidade Técnica de Lisboa
Actuarial Sciences

Pierre Hoonhout

PhD University College London, UK
Econometrics and Panel Data

Raul Brás

PhD ISEG, Universidade Técnica de Lisboa
Operational Research

Rui Paulo

PhD Duke University, USA
Statistics

Telmo Peixe

PhD Faculdade de Ciências, Universidade de Lisboa
Dynamical Systems



Details and Study Plan

Schedule:

Evening Lectures

Participating Centres:

APPLIED MATHEMATICS (CEMAPRE),
ECONOMICS (UECE).

Start Date:

September

Tuition Fees:

€3,000 – 1st Year;
€2,000 – 2nd – 3rd Years;
€1,000 – 4th – 6th Years



year 1

Course Units	Professor	Credits	Semester
Advanced Topics of Econometrics*	Pierre Hoonhout	10.0	1
Advanced Topics of Statistics*	Rui Paulo	10.0	1
Analysis and Optimisation*	Manuel Castro Guerra	10.0	1
Computational Mathematics*	João Janela	10.0	1
Elective	-	6.0	1
Seminar I	Teresa Chaves de Almeida	4.0	1
Elective	-	6.0	2
Preparation of the Thesis Project	Teresa Chaves de Almeida	24.0	2

*The Scientific Committee of the PhD chooses two out of the four course units for each student.

year 2

Course Units	Professor	Credits	Semester
Thesis (Research Seminar)	-	60.0	-

year 3

Course Units	Credits	Semester
Thesis (Research Seminar)	60.0	-

electives

Course Units	Professor
Advanced Risk Theory	Alfredo Egídio Dos Reis
Financial Econometrics	João Nicolau
Macroeconometrics	Artur Da Silva Lopes
Mathematical Methods for Finance	João Guerra
Operational Research	Teresa Chaves De Almeida
Panel Data	Isabel Proença
Time Series Analysis and Forecasting	Jorge Caiado

PhD in *Development Studies*

Taught in English

ISEG Scientific Committee

Francisco Louçã

Alexandre Abreu

Carlos Castel-Branco



ICS Scientific Committee

Olivia Bina

Simone Tulumello

Roberto Falanga



IGOT Scientific Committee

Jorge Malheiros

Margarida Queirós

Mário Vale



ISA Scientific Committee

Luís Goulão

José Lima Santos

Luís Mira da Silva



Target

Anyone interested in obtaining advanced academic training and doing research with a view to working in jobs related to international and national development in the public sector, the private sector, or the non-profit sector. Out-going students can find employment in teaching and research posts, managerial and executive positions in international and national organisations, consultancy, training, research projects, journalism, planning, development projects, public policy planning and evaluation, and social projects and social policies.

This programme is lectured in English, but offers tutorials in both Portuguese and English. The PhD thesis may be written in Portuguese or English.

Entry Conditions And Selection Criteria

Anyone holding a Masters degree in the areas of Economics, Management, Law, Sociology, Geography, Political Science, International Relations, History, Anthropology, or any other area deemed appropriate. Students who obtained a GPA of 16 or more (out of 20) or, in special circumstances, students whose GPA is lower than 16 but have demonstrated appropriate academic training or professional experience may also apply. The Scientific Committee of the PhD Programme will choose candidates on the basis of the following criteria:

- > Masters and respective final grade;
- > First degree and respective final grade;
- > Academic and relevant professional experience;
- > Research proposal.

Study Topics

Research topics for the doctoral thesis and course units are grounded in a broad range of issues related to the development of contemporary societies and its methodological variables and analytical tools. The emphasis is on poverty, inequality and equality issues; development economics and aid finance; sustainable development and transitions; development cooperation, policy and political issues; geography and urbanization; mobility and migration; gender studies; security-development nexus; sustainable consumption, agriculture and contemporary agrarian transformation; food production and ecosystem services; and theoretical critiques to development.

As a Development Studies Programme, interdisciplinary links are established between Economics, Sociology, Geography, Social and Economic History, Political Science and Law, and Environmental and Agrarian Studies - thus providing an integrated perspective of development and sustainability issues in contemporary societies. Great attention is paid to the improvement of students' skills in research methods and techniques which are required for development studies. Successful candidates will have different disciplinary, cultural and experiential backgrounds, and this is considered a crucial part of the learning experience. The PhD programme's topics are explored through course units which include: theories of development and modernity, the policy and politics of development, sustainability transitions and a focus on urban and rural development. Throughout these units we encourage dialogue and team work to maximise the benefit of diverse backgrounds and worldviews.

Programme Structure

The PhD Development Studies is a three-year programme in which students must obtain a total of 180 ECTS (credits). It comprises:

- ▼ Courses (60 ECTS credits);
- ▼ Preparation, submission and defence of thesis (120 ECTS).

Courses are taught in the first year of the Programme over 2 semesters. They are:

1ST SEMESTER

- ▼ Theories of Modernity and Development (9.0 ECTS credits)
- ▼ Development in Transition (12.0 ECTS credits)
- ▼ Research Methods in Development Studies (6.0 ECTS credits)
- ▼ Research Seminar I (3.0 ECTS credits)

2ND SEMESTER

- ▼ Development Policy and Politics (7.5 ECTS credits)
- ▼ Research Essay (4.5 ECTS credits)
- ▼ Topics in Development Studies (3.0 ECTS credits)
- ▼ Elective Modules of Research Methods (6.0 ECTS credits)
- ▼ Research Seminar II (3.0 ECTS credits)
- ▼ Elective Unit (6.0 ECTS credits)

The classes are taught at ISEG (coordinating university) and at the other Schools (ICS, IGOT and ISA) according to a schedule to be announced.

“

I studied for the PhD in Development Studies after an experience of over seven years managing international development projects and programmes. With a background in Political Science and International Relations and an MSc in Development Studies, I felt the need to go back to academia and build new bridges between theory and practice. In development cooperation, especially in the current global transition context, strong research skills and the capacity to analyse complex systems are key for any professional in development cooperation, especially in the current global transition context.

This PhD is a joint programme between ISEG and other three Schools of the Universidade de Lisboa (Agronomy, Geography and Urban Planning, and Social Sciences), providing the multidisciplinary perspective we need to approach global development challenges. A diverse body of faculty and researchers is available to provide input to our ongoing research, which I found especially useful. I will surely rely on this experience to continue growing as an international development researcher-practitioner.



Ana Luísa Silva

PhD Student and Researcher at
CEsA - Centre for African and
Development Studies

“

The PhD in Development Studies is a multidisciplinary and heterodox programme that has enabled me to acquire distinctive aptitudes to understand socio-economic development phenomena. This programme is unique in that it offers a comprehensive approach that simply cannot be found in most advanced economics courses. In addition, having an after working hours regime and a particularly interesting offer for professionals from Portuguese-speaking countries or from the global south in general, this PhD is specially tailored for consultants like me in the area of development and multilateral cooperation. The teaching staff mirrors this multidisciplinary model and the fact that the PhD is developed by four different schools at the Universidade de Lisboa one of the strengths of the course. Overall, my experience has been very positive, with the PhD not only contributing to my growth as a professional, but also to my development as a citizen.



Diogo Maia

Researcher at CEsA - Centre for
African and Development Studies
Senior Economics Consultant at
NEMUS - Gestão e Requalificação
Ambiental

Faculty and Subject Areas

Coordination Committee

Francisco Louçã (ISEG, Coordinator)
PhD in Economics, ISEG, 1996,
Universidade de Lisboa

Olivia Bina (ICS)
PhD and MPhil in Geography,
University of Cambridge, UK

Jorge Malheiros (IGOT)
PhD in Human Geography,
Universidade de Lisboa

Luis Goulão (ISA)
PhD in Agronomic Engineering,
ISA- Universidade de Lisboa

Scientific Committee

Francisco Louçã (ISEG)
PhD in Economics, ISEG,
Universidade de Lisboa

Margarida Queirós (IGOT)
PhD in Human Geography,
Universidade de Lisboa

Roberto Falanga (ICS)
PhD in Democracy in the 21st Century
(Sociology), Universidade de Coimbra

Carlos Castel-Branco (ISEG)
PhD in Economics, School of Oriental and
African Studies, University of London

Mário Vale (IGOT)
PhD in Human Geography,
Universidade de Lisboa

Luis Goulão (ISA)
PhD in Agronomic Engineering, ISA,
Universidade de Lisboa

Alexandre Abreu (ISEG)
PhD in Economics, School of Oriental and
African Studies, University of London

Olivia Bina (ICS)
PhD in Geography,
University of Cambridge, UK

José Lima Santos (ISA)
PhD in Environmental Economics and Natural
Resources, University of Newcastle, UK

Jorge Malheiros (IGOT)
PhD in Human Geography,
Universidade de Lisboa

Simone Tulumello (ICS)
PhD in Urban and Regional Planning,
University of Palermo

Luís Mira da Silva (ISA)
PhD in Agricultural Systems, University of
Reading, UK

Other faculty members involved in the PhD Programme

Carlos Lourenço (ISEG)
PhD in Marketing, University of Tilburg,
The Netherlands

Edalina Sanches (ICS)
PhD in Political Science (Comparative
Politics), Universidade de Lisboa

Verónica Policarpo (ICS)
PhD in Social Sciences (Sociology),
Universidade de Lisboa

João Carlos Graça (ISEG)
PhD in Economics, ISEG,
Universidade de Lisboa

José Luis Cardoso (ICS)
PhD in Economics, ISEG,
Universidade de Lisboa

António Lopes (IGOT)
PhD in Physical Geography, Universidade de
Lisboa

Leonor Costa (ISEG)
PhD in Social and Economic History,
ISEG, Universidade de Lisboa

José Sobral (ICS)
PhD in Anthropology, ISCTE – I.U.
Lisboa

Jennifer McGarrigle (IGOT)
PhD in Urban Studies, University of Glasgow,
UK

Luís Mah (ISEG)
PhD in Development Studies, London
School of Economics, University of
London

Marco Allegra (ICS)
PhD in Political Science,
University of Torino

Andres Malamud (ICS)
PhD in Political and Social Sciences,
European University Institute

Pedro Figueiredo Neto (ICS)
PhD in Anthropology, École des Hautes
Études en Sciences Sociales - Paris
and ISCTE - I.U. Lisboa

Details and Study Plan

Schedule:
Evening Lectures

Participating Centres:
CSG – ISEG; UECE-ISEG
ICS – ULisboa; CEG-IGOT
LEAF-ISA; CEF-ISA

Start Date:
September

Tuition Fees:
€3,000 – 1st Year;
€2,000 – 2nd – 3rd Years;
€1,000 – 4th – 6th Years



year 1

Course Units	Course Convenor	Credits	Semester
Theories of Modernity and Development	Francisco Louçã (ISEG)	9.0	1
Development in Transition	Olivia Bina (ICS)	12.0	1
Research Methods in Development Studies	Alexandre Abreu (ISEG)	6.0	1
Research Seminar I	Carlos Castel-Branco (ISEG)	3.0	1
Development Policy and Politics	Luís Mah (ISEG)	7.5	2
Topics in Development Studies	Mário Vale (IGOT)	3.0	2
Research Seminar II	Carlos Castel-Branco (ISEG)	3.0	2
Research Essay	-	4.5	2
Elective Unit	-	6.0	2
Elective Modules of Research Methods	-	6.0	2

year 2

Course Units	Professor	Credits	Semester
Thesis	-	60.0	-

year 3

Course Units	Professor	Credits	Semester
Thesis	-	60.0	-

PhD in ***Economic and Organisational Sociology***

The PhD in Economic and Organisational Sociology is a 3rd Cycle degree, launched in 1991, which aims to further knowledge and produce original research in this specific field of study. It is hosted by SOCIUS – the Research Centre in Economic and Organisational Sociology, a unit integrated into the wider CSG-Research in Social Sciences and Management consortium, which was evaluated as Very Good by the FCT – the Portuguese Foundation for Science and Technology.

Taught in Portuguese

Scientific Committee

Sara Falcão Casaca (Coordinator)
Associate Professor

Daniel Seabra Lopes
Assistant Professor

Marta Varanda
Assistant Professor

Target Audience

Students seeking to obtain a PhD degree with the aim of working in a highly qualified position in the public, private or social economy sector, in either a national or an international context. Such roles might include teaching and research, leadership and management of organisations, consultancy, training, journalism, planning, project development, and the design and evaluation of public policies, projects and programmes.

Study Methodology

Admission to the programme is dependent on the scientific board evaluating a brief proposal written by the applicant and relating to the PhD thesis research topic. Once the applicant has been accepted, a supervisor is appointed to guide the in-depth preparation of the thesis project throughout the first year, which is then presented and discussed at the Research Seminar.

At the end of the first year, a consolidated version of the thesis project is assessed by an examination panel comprising representatives from ISEG and other institutions, who may suggest improvements or even the project's discontinuation from the programme. When the thesis project is accepted, it is then registered and the supervisor confirmed.

According to the Rules and Regulations for ISEG PhD Programmes, the process of preparing, researching and writing a thesis lasts for two academic years.

Admission to the PhD programme includes registration for the International Workshop on Economic and Organisational Sociology, which takes place at the beginning of each academic year.

Admission and Selection Criteria

Applicants must hold a Master's Degree qualification in the fields of Sociology, Economics, Management or other Social Sciences ruled acceptable by the Scientific Board. Applicants holding only a Bachelor's degree in one of these subjects may also apply whenever having graduated with a minimum grade of 16 (on the Portuguese scale) or, exceptionally, with a lower grade when submitting a curriculum that demonstrates an appropriate scientific background or professional experience. The selection process is carried out by the PhD Programme Scientific Board in accordance with the following criteria:

- > Master's degree and the respective final grade;
- > Bachelor's degree and the respective final grade;
- > Academic curriculum and relevant professional experience;
- > A preliminary draft of the research proposal, indicating the theme, theoretical background and methods.

Themes and Topics

What are the effects of a rapidly changing global economy? What is the role of states, markets, institutions, organisations and individuals in shaping economic and financial practices? What explanatory links may we find, both in the past and today, between the economy and politics, culture, technology or the environment? Why are only some markets ethical? How are global citizens involved in decision-making processes regarding their daily economic and financial lives? How are organisations reshaped to cope with a VUCA world? How does work balance with other dimensions of life in the 21st century? What are the main social and economic determinants of labour market segmentation in the global and digital economy? These constitute some of the questions discussed during course work and currently under research at SOCIUS-CSG. The themes and topics of this PhD revolve around the economy, finance and organisations in our contemporary societies. The programme proposes looking at markets and organisations as nuanced, complex and sometimes conflicting social realities, thus challenging students to put forward new readings of the rationalist paradigm of neoclassical economics that focuses on the optimal behaviour of economic agents. Highlighting the interplay between economic, social and cultural dimensions in the constitution of individual agents and their societies, this programme contributes to enriching the existing array of social science accounts of the economy through multidisciplinary approaches. PhD students can undertake research in the fields of economic sociology, organisational studies, sustainable development, science and technology studies, social studies of finance, classical sociological theory, cultural economy, migration studies, gender studies and value theory, among others. Therefore, a corresponding variety of research objects are open to consideration, including public policies, corporate social responsibility, corporate governance, formal and informal markets, alternative economies and the DIY culture, property rights, cultural industries, money and payment systems, professions and work or third sector organisations. This also involves different methodological approaches, from statistical analysis (descriptive and inferential), to experimental studies, participant methodologies, ethnography and social network analysis. The programme benefits from a dynamic environment of discussion and active feedback from the student academic community, the researchers and lecturers of SOCIUS/CSG, the Research Centre in Economic and Organisational Sociology. For instance, the PhD comprises a series of annual conferences, workshops and seminars, where students may present and discuss their work before an audience composed of other national and international researchers, policy-makers and members of civil society. The programme also benefits from the range of links between SOCIUS/CSG and other national and international research networks as well as from its location in the historical centre of a vibrant city, Lisbon.

“

When I decided to start the PhD Programme in Economic and Organisational Sociology, I wanted to invest in my professional career and increase my research skills. So far these objectives have been accomplished since the programme provides a challenging educational experience within a multicultural research environment. It includes seminars, conferences, workshops, teaching and project opportunities in cooperation with other national and international research centres. Besides that, ISEG stands out for the seriousness and scientific quality of its faculty, which is distinguished by its supportive, integrated and human approach.”



Helena Gata

PhD Student in Economic and Organisational Sociology
Strategic Management Consultant and ESLIDER Portugal President



Faculty and Subject Areas

Amílcar Moreira

PhD from University of Bath
Social Policies, Pensions, Poverty and
Income Distribution

Daniel Seabra Lopes

PhD from Universidade Nova de Lisboa and
Universidade de Lisboa (ISEG)
Social Studies of Finance, Economic
Sociology, Organisational Ethnography

Idalina Sardinha

PhD from University of Amsterdam
Corporate Social Responsibility and
Development

João Carlos Graça

PhD from Universidade de Lisboa (ISEG)
Sociological Theory

João Peixoto

PhD from Universidade de Lisboa (ISEG)
International Migration, Demography and
Economic Sociology

Maria João Santos

PhD from Universidade de Lisboa (ISEG)
Organisational Theories and Sociology
of Work

Marta Varanda

PhD from Université des Sciences et
Technologies de Lille, France
Organisational sociology, Social Network
Analysis, Water Governance

Rafael Marques

PhD from Universidade de Lisboa (ISEG)
Sociology of Morality, Social Theory,
Economic Sociology and Political Sociology

Rita Raposo

PhD from Universidade de Lisboa (ISEG)
Urban Studies, Sociology of Culture and
Social Theory

Sara Falcão Casaca

PhD from Universidade de Lisboa (ISEG)
Sociology of Work, Gender Studies and
Research Methods

Sofia Bento

PhD from École des Mines de Paris, France
Social Studies of Science and Technology
and Participatory Research Methods

Guest Speakers from Previous Editions

Afonso Sousa-Poza

PhD from University of Hohenheim

Bruce Carruthers

PhD from Northwestern University

Enzo Mingione

PhD from Università di Milano-Bicocca

Ezra W. Zuckerman

PhD from MIT Sloan School of Management

Juan José Castillo

PhD from Universidad de Madrid

Maurício Serva

PhD from Universidade Federal de Santa
Catarina

Mike Saks

PhD from University Campus Suffolk

Neil Fligstein

PhD from University of
California, Berkeley

Philippe Steiner

PhD from Université de Paris IV

Richard Swedberg

PhD from Cornell University

Roberto Herranz González

PhD from Universidad de Santiago
de Compostela



Details and Study Plan

Schedule:

Evening Lectures

Participating Centres:

Economic Sociology (SOCIUS/CSG)

Start Date:

September

Tuition Fees:

€3,000 – 1st Year;

€2,000 – 2nd – 3rd Years;

€1,000 – 4th – 6th Years



year 1

Course Units	Professor	Credits	Semester
Economic Sociology	-	7.5	1
Work and Organisations	-	7.5	1
Research Methods and Techniques	-	7.5	1
Research Seminar I	-	7.5	1
Topics and Debates about Economic Sociology	-	7.5	2
Topics and Debates about Work and Organisations	-	7.5	2
Elective	-	7.5	2
Research Seminar II	-	7.5	2

year 2

Course Units	Professor	Credits	Semester
Thesis (Research Seminar III)	-	60.0	-

year 3

Course Units	Professor	Credits	Semester
Thesis (Research Seminar IV)	-	60.0	-

PhD in *Economic and Social History*

The PHD in Economic and Social History was created by the Universidade Técnica de Lisboa in 1991, and was subsequently adapted to the European Higher Education Area standards in 2009. It is a 3rd Cycle degree that aims to teach and produce original research in the field of economic and social history. The degree aims to train specialists who have a high capacity of interpretation and response to the economic and social transformations over time and in the interaction between the chronological, geographical and social aspects of these transformations.

Taught in Portuguese

Scientific Committee

Nuno Valério (Coordinator)
Full Professor

Maria Paula Fontoura
Full Professor

Leonor Freire Costa
Associate Professor

Pedro Neves
Assistant Professor

Target

Those who want an advanced education and who wish to carry out research with the aim of working in a highly qualified position in the public sector, the private sector or the social economy sector, in the area of national and international development. Such positions include teaching and research, leadership and management of national and international organisations, consulting, training, research study and projects, journalism, planning, project development, and the design and evaluation of public policies and of social projects and policies.

Study Topics

The study topics are chosen from the following fields:

- > Economic History;
- > Business History;
- > Social History;
- > History of Economic Thought.

Entry Conditions and Selection Criteria

Graduates may be admitted to study for the PhD in Economic and Social History if they hold a Masters in fields of Social Sciences (Economics, Sociology, Management and Finance) or Arts and Humanities (History). Graduates who only hold a Bachelors in one of the these subjects may also apply, as long as they have a minimum grade of 16, or exceptionally a lower grade, together with a curriculum that proves an adequate scientific background or professional experience. The selection of candidates is made by the Scientific Committee of the PhD Programme, based on the following criteria:

- > Masters and respective final grade;
- > Bachelors and respective final grade;
- > Scientific curriculum and relevant professional experience.

Study Methodology

A proposal regarding the research topic of the PhD thesis is presented by the candidate before an examination panel. After being accepted for the programme, a supervisor is appointed to tutor the student during the in-depth preparation of their thesis project during the 1st Year. The thesis project is presented and discussed during the 1st Year Seminars. At the end of the 1st Year, a consolidated version of the thesis project is assessed by an examination panel appointed by the Programme Coordinator. The panel presents its recommendation and may suggest alterations, or recommend that the student discontinue their studies. If the thesis project is accepted, it is then registered and the name of the supervisor is confirmed. The process of preparing, researching and writing a thesis lasts for two academic years, according to the Rules and Regulations for ISEG PhD Programmes.

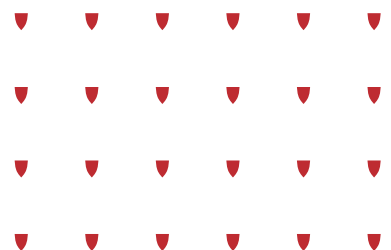
“

I understand that the evolution of a career must be accompanied by a continual improvement of one's academic education, especially as we live in a world where the labour market is becoming increasingly competitive. Thus, given my interest in issues related to the Economic and Social History of Portugal, in particular those relating to the 'Estado Novo', I chose to study for a PhD in this area. I chose the ISEG PhD in Economic and Social History, not only because of the indisputable experience and quality of its professors, but also on account of the fact that ISEG is the oldest and most traditional School of Economics in Portugal.”



Ricardo Ferraz

PhD in Economic and Social History
Economist



Faculty and Subject Areas

Amélia Branco

PhD ISEG, Universidade de Lisboa
Economic and Business History and
Quantitative Finance

Ana Bela Nunes

PhD ISEG, Universidade de Lisboa
Economic History

António Goucha Soares

PhD European University, Florence, Italy
European Law

Leonor Freire Costa

PhD ISEG, Universidade de Lisboa
Economic History, Financial History and
Colonial and Maritime History

Nuno Valério

PhD ISEG, Universidade de Lisboa
Economic History, History of Economic
Thought and Economic Systems

Pedro Neves

PhD ISEG, Universidade de Lisboa
Business History

Rita Martins de Sousa

PhD ISEG, Universidade de Lisboa
Monetary and Financial History and
Business History



Details and Study Plan

Schedule:
Evening Lectures

Participating Centres:
GHES – ECONOMIC AND SOCIAL HISTORY
RESEARCH UNIT

Start Date:
September

Tuition Fees:
€3,000 – 1st Year;
€2,000 – 2nd – 3rd Years;
€1,000 – 4th – 6th Years



year 1

Course Units	Professor	Credits	Semester
Research Methodology	Nuno Valério	10.0	1
Elective I	-	10.0	1
Seminar I	Leonor Freire Costa	10.0	1
Elective II	-	10.0	2
Elective III	-	10.0	2
Seminar II	Pedro Neves	10.0	2

year 2

Course Units	Professor	Credits	Semester
Thesis (Research Seminar)	-	60.0	-

year 3

Course Units	Professor	Credits	Semester
Thesis (Research Seminar)	-	60.0	-

elective I

Course Units	Credits	Semester
Any course unit of an ISEG PhD Programme	10.0	1

elective II

Course Units	Credits	Semester
Any course unit of an ISEG PhD Programme	10.0	1

PhD in *Economics*

The main aim of the PhD in Economics is to provide advanced education in preparation for a position in a profession that demands a high level of technical and scientific qualification. It also allows pursuing an international career in Economics and in highly-qualified roles in the public or private sector.

Taught in English

Scientific Committee

António Afonso (Coordinator)
Full Professor

Isabel Proença
Associate Professor

Joana Pais
Associate Professor

Target

Those who are looking for an advanced education and who wish to carry out research in Economics, in preparation for a highly-qualified role in the public sector or private sector. Such a position includes university teaching and research, the leadership and management of national and international organisations, consulting, training, and research projects and studies.

Entry Conditions and Selection Criteria

Applications are welcome from graduates of the ISEG Masters in Economics, the Masters in Monetary and Financial Economics, or an equivalent Masters.

Applicants who have a Masters or equivalent degree in another field may be admitted, but only if they have successfully studied for a syllabus similar to the syllabus of the 1st Semester of the ISEG Masters in Economics.

The selection of candidates is carried out by the Scientific Committee of the PhD Programme, based on the following criteria:

- > Masters and respective final grade;
- > Bachelors and respective final grade;
- > Scientific curriculum and relevant professional experience.

Study Topics

For the PhD Programme in Economics, subjects of an economic nature are studied to an advanced level (Macro and Microeconomics), as well as their application, employing mathematical, statistical and econometric methods.

Study Methodology

At the end of the 1st Year of the programme, a consolidated version of the thesis project is assessed in the Research Seminar, where alterations are suggested, and a supervisor is appointed from amongst the faculty. The processes of preparing, researching and writing a thesis lasts for two academic years, in accordance to the Rules and Regulations for ISEG PhD Programmes. Thesis topics can be typically related to the research of the faculty, which as been published notably in top journals such as: *American Economic Review*; *European Economic Review*; *Experimental Economics*; *Games and Economic Behavior*; *Journal of Banking and Finance*; *Journal of Business & Economic Statistics*; *Journal of Econometrics*; *Journal of Economic Dynamics and Control*; *Journal of International Economics*; *Journal of International Money and Finance*; *Journal of Monetary Economics*; *Journal of Regional Science*; *Oxford Economic Papers*; *Public Choice*.

“

Studying at ISEG has definitely been one of the most fruitful experiences of my life, both academically and personally. I chose to study for a PhD in Economics in the hope that I would expand my theoretical knowledge and also to acquire the skills to apply this theoretical knowledge in both a practical and conceptual framework. The programme at ISEG has exceeded all my expectations that I had when applying. My interest in studying the financial stability of Latin American countries led me to Portugal and the exceptional facilities, the experienced and diverse faculty as REM drew me to ISEG. As a PhD candidate, I am affiliated to REM and had the opportunity to contribute to one of the research centre's projects. Under the supervision of a senior professor and researcher, I have been able to produce three working papers to date. I have also had the opportunity to present my work at a number of conferences in Portugal as well in China. I undoubtedly recommend ISEG.



Zoë Venter

PhD Student

“

When I decided to do my PhD in Economics, the two aspects I valued the most were both the teaching staff and the research quality of the university that I was applying to. The teaching staff of the PhD in Economics at ISEG brings together some of the best experts in their fields who with their international experience provide a programme of the highest quality. For this reason the 1st academic year was one of the most demanding I have faced as student. It has enabled me to gain much more knowledge than I learned at the Masters level and has addressed current leading topics of economic research. The knowledge of Monetary and Financial Economics (also from ISEG) was a plus to keep track of all the new things I learned. All of this is associated with a diversity of analytical tools, such as Mathematics or Econometrics, which certainly will be important for my research project.

We start to take the first steps for our research project as early as the 1st Year, and since the beginning I have felt that the professors are always ready to listen our interests and to give us support. Furthermore, we are encouraged to participate in several forums, both to get in touch with current research and to discuss and present our work.



André Oliveira

Statistics Department, Banco de Portugal

Faculty and Subject Areas

António Afonso

PhD from ISEG, Universidade Técnica de Lisboa
Macroeconomics

Bernardino Adão

PhD from University of Minnesota, US
Macroeconomics

Jacinto Braga

PhD from University of Nottingham, UK
Microeconomics

Joana Pais

PhD from Universitat Autònoma de Barcelona, Spain
Microeconomics

José Pedro Pontes

PhD from ISEG, Universidade Técnica de Lisboa
Microeconomics

Luís Catão

PhD from University of Cambridge, UK
Macroeconomics

Luís Costa

PhD from York University, UK
Macroeconomics

Paulo Bastos

PhD from University of Nottingham, UK
Microeconomics

Paulo Brito

PhD from ISEG, Universidade Técnica de Lisboa
Macroeconomics

Paulo Parente

PhD from University of Warwick, UK
Econometrics

Sandra Gomes

PhD from ISEG, Universidade Técnica de Lisboa
Macroeconomics

Sandra Maximiano

PhD from University of Amsterdam, Netherlands
Microeconomics

Susana Santos

PhD from ISEG, Universidade Técnica de Lisboa
Macroeconomics

Tanya Vianna de Araújo

PhD from ISEG, Universidade Técnica de Lisboa
Computational Economics and Complex Systems



Details and Study Plan

Schedule:
Evening Lectures

Participating Centres:
REM – Research in Economics and
Mathematics (Economics, UECE;
Applied Mathematics, CEMAPRE)

Start Date:
September

Tuition Fees:
€3,000 – 1st Year;
€2,000 - 2nd – 3rd Years;
€1,000 - 4th - 6th Years



year 1

Course Units	Professor	Credits	Semester
Advanced Econometrics	Paulo Parente	7.5	1
Advanced Economic Mathematics	Paulo Brito	7.5	1
Advanced Macroeconomics	Pailo Brito, Bernardino Adão, António Afonso	7.5	1
Advanced Microeconomics	Jacinto Braga, Pedro Pontes	7.5	1
Macroeconomic Topics	Luís Costa, Sandra Gomes, António Afonso	7.5	2
Microeconomic Topics	Pedro Pontes	7.5	2
Seminar	António Afonso	7.5	2
Elective	-	7.5	2
Computational Economics	Tânia Vianna De Araújo	7.5	2
Applied Economics	Susana Santos	7.5	2
Experimental Economic	Sandra Maximiano	7.5	2

year 2

Course Units	Professor	Credits	Semester
Thesis (Research Seminar)	-	60.0	-

year 3

Course Units	Professor	Credits	Semester
Thesis (Research Seminar)	-	60.0	-

PhD in *Management*

The PhD in Management aims to provide PhD students with a deep understanding of the problems of Management and a solid education in the methods and techniques for applied research in Management.

Taught in Portuguese

Scientific Committee

Vítor da Conceição Gonçalves
(Coordinator)
Full Professor

Carlos Costa
Associate Professor

Maria João Guedes
Senior Assistant Professor

Nuno Crespo
Assistant Professor

Target

The PhD in Management is of particular interest for those who want to pursue an academic career in higher education and who want to carry out advanced research in management in public or private organisations.

Study Topics

The main fields of research for the PhD in Management are: Organisational Behaviour, Human Resources, Finance, Accounting, Information Systems, Operations Management, Strategy and Marketing.

Study Methodology

The PhD student must register their thesis project during the 2nd Year of the PhD Programme, summarising the research topic and the name of the intended supervisor. To register their thesis project, the student must have obtained at least 40 credits in course units. The thesis project must be submitted for defence up until the end of the 2nd Year and be defended by the beginning of the 3rd Year. The thesis project is an important part of the research work. The project should include:

- > The definition of the research question;
- > A revision of the relevant literature;
- > The strategy for the subsequent research, including the techniques for the collection and analysis of the data to be used;
- > A chronogram of the work already done, and yet to be carried out.

Upon receipt of the thesis project, the Programme Coordinator will appoint an examination panel that will assess the project and its respective presentation and defence. Having assessed the project, the examination panel emits its opinion about the thesis and may suggest amendments and a possible re-submission of the project, or even recommend its discontinuation. In addition to the thesis project, the PhD student should also make a presentation about the current state of their research during the course of the study programme. This communication will take place during the second year of the programme, during one of the seminars which are regularly organised by the Department of Management, which has to be booked by the PhD student with the Department of Management Office.

Entry Conditions And Selection Criteria

The following are welcome to apply to study for a PhD in Management:

- > Graduates with a Masters, or equivalent;
- > Graduates with a Bachelors degree who have an especially relevant academic scientific curriculum which recognises their capacity to study for this study cycle.

Applications are made online and have to include, amongst other documents:

- > Bachelors and Masters degree certificates;
- > A thesis project proposal of up to 2,000 words;
- > C.V.

“

The ISEG PhD in Management is a solid investment, leveraged by experienced professors and fantastic facilities. If you are bold enough to begin this journey, a lot of work awaits you, but the right guidance will help you achieve excellence.



Carlos Cabeleira

PhD in Management, 2017
Innovation Manager and Policy Expert, Lisbon, Portugal

“

As a lecturer in Accounting, the PhD at ISEG provided me great tools to develop my research capabilities, mainly in terms of methodologies. Adding to this, the PhD provided me the possibility to be integrated in a recognised research centre - ADVANCE, that is helping me to further boost my research.



Daniela Penela

PhD in Management, 2018
Invited Assistant Professor at ISCTE-IUL, Lisbon, Portugal

International Partners

The PhD in Management counts on the collaboration of professors and researchers from various European and North American universities. The membership of the Lisbon School of Economics and Management of the Academic Council of EIASM (the European Institute for Advanced Studies in Management) in Brussels enables our PhD students to participate in subsidised short international seminars which are specifically designed for PhD students. These seminars are well-known for their quality and they are a great help for PhD students. PhD students can also carry out part of their studies at foreign universities by means of the various exchange agreements with ISEG.



Faculty and Subject Areas

Amélia Bastos

PhD from ISEG, Technical University of Lisbon
Statistics

Ana Isabel Morais

PhD from ISCTE-IUL
Accounting

António Palma dos Reis

PhD from University of Wisconsin, USA
Information Systems

António Samagaio

PhD from ISEG, University of Lisbon
Accounting

Carla Curado

PhD from ISEG, Technical University of Lisbon
Human Resources Management and Organisational Behaviour

Clara Raposo

PhD from London Business School, UK
Finance

Cristina Gaio Silva

PhD from ISCTE-IUL
Accounting

Cristina Sales Baptista

PhD from Luleå University of Technology, Sweden
Marketing and Strategy

Eduarda Soares

PhD from University of Tilburg, Netherlands
Human Resources Management and Organisational Behaviour

Graça Silva

PhD from Nova University of Lisbon
Operations Management

Gurpreet Dhillon

PhD from London School of Economics, UK
Information Systems

Helena Gonçalves

PhD from ISEG, Technical University of Lisbon
Marketing and Strategy

Helena Jerónimo

PhD from University of Cambridge, UK
Human Resources Management and Organisational Behaviour

Inês Pinto

PhD from ISEG, University of Lisbon
Accounting

Isabel Proença

PhD from Université Catholique de Louvain, Belgium
Mathematics

João Carvalho das Neves

PhD from Manchester Business School, UK
Finance

João Mota

PhD from Porto University
Marketing and Strategy

João Duque

PhD from Manchester Business School, UK
Finance

João Novais Santos

PhD from ISEG, University of Lisbon
Marketing and Strategy

Jorge Gomes

PhD from Manchester Business School, UK
Human Resources Management and Organisational Behaviour

José Augusto Felício

PhD from ISEG, Technical University of Lisbon
Marketing and Strategy

José Azevedo Pereira

PhD from Manchester Business School, UK
Finance

José Veríssimo

PhD from Manchester Business School, UK
Marketing and Strategy

Luís Gonçalves-Pinto

PhD from University of Southern California, USA
Finance

Maria João Guedes

PhD from Imperial College, UK
Accounting

Margarida Duarte

PhD from Manchester Business School, UK
Marketing and Strategy

Mário Caldeira

PhD from Cranfield School of Management, UK
Management and Information Systems

Nuno Fernandes Crespo

PhD from ISEG, University of Lisbon
Marketing and Strategy

Paulo Lopes Henriques

PhD from ISEG, Technical University of Lisbon
Human Resources Management and Organisational Behaviour

Pilar Conde

PhD from ISEG, University of Lisbon
Human Resources Management and Organisational Behaviour

Raquel Gaspar

PhD from Stockholm School of Economics, Sweden
Finance

Rui Brites

PhD from ISCTE-IUL
Techniques for Management Research

Sofia Lourenço

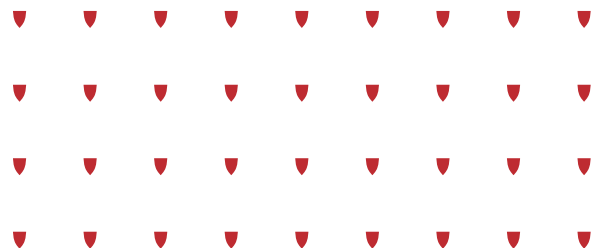
PhD from Harvard Business School, USA
Accounting

Tiago Gonçalves

PhD from ISEG, University of Lisbon
Accounting

Vítor da Conceição Gonçalves

PhD from University of Seville, Spain
Marketing and Strategy



Details and Study Plan

Schedule:
Evening Lectures

Participating Centres:
Management (ADVANCE),
Economics (UECE) and
Applied Mathematics
(CEMAPRE)

Start Date:
September

Tuition Fees:
€3,000 - 1st Year;
€2,000 - 2nd - 3rd Years;
€1,000 - 4th - 6th Years

year 1

Course Units	Professor	Credits	Semester
Probability and Statistics Topics	Amélia Bastos	10.0	1
Research Methodology	Carla Curado	10.0	1
Elective I	-	10.0	1
Elective II	-	7.5	2
Elective III	-	7.5	2
Elective IV	-	7.5	2
Elective V	-	7.5	2

year 2

Course Units	Professor	Credits	Semester
Thesis (Research Seminar)	-	60.0	-

year 3

Course Units	Professor	Credits	Semester
Thesis (Research Seminar)	-	60.0	-

elective I

Course Units	Professor	Credits	Semester
Topics in Strategic Management	Vítor da Conceição Gonçalves	10.0	1

elective II to V

Course Units	Professor	Credits	Semester
Organisational Behaviour	Paulo Lopes Henriques	7.5	2
Information Systems Research Strategies	Mário Caldeira	4.0	2
Corporate Finance	João Carvalho das Neves	7.5	2
Accounting Research	Sofia Lourenço/Maria João Guedes Cristina Gaio Silva	7.5	2
Investments and Financial Markets	Luís Gonçalves-Pinto	7.5	2
Applied Techniques for Research In Management	Isabel Proença/Rui Brites	7.5	2
Marketing Theory and Research	João Mota	7.5	2
Research Topics for Information Systems	António Palma dos Reis	3.5	2
Research Seminar	Margarida Duarte	8.0	2

PhD in *Partnership*



Sustainable Energy Systems

This PhD is offered in partnership with Instituto Superior Técnico (IST) and Lisbon School of Economics and Management (ISEG), together with the participation of Massachusetts Institute of Technology (MIT), as part of the MIT–Portugal Programme.

The model of integrated education in Engineering and Economics, which is offered as a joint venture between Instituto Superior Técnico (IST) and ISEG - Lisbon School of Economics and Management, is distinguished by the educational stimulation of students, with the aim of creating new leaders who are able to develop and implement innovative strategies for sustainable energy systems development in real-life situations. The curriculum of the PhD in SSE enables these competitive advantages through curricular activities and rigorous research, which is taught by internationally-recognised faculty, including those from Massachusetts Institute of Technology, under the MIT-Portugal Programme, as well as the introduction of innovative learning methods.

Objectives

- Create knowledge based on state-of-the-art R&D in several fields, promoting the development of innovative products and also the integration of technologies under the framework of sustainable energy systems;
- Promote new forms of interaction between universities and companies, government and society, for the identification and sustainable implementation of new energy policies, science and technology and innovation.

Sustainability Science

REASOn | REsources, Food and Society

The challenges which society faces are complex and multidimensional, leading to new paradigms associated with sustainable development. To be promoters of change, the 21st century professionals must be endowed with solid scientific knowledge and, most importantly, must hold the capacity to incorporate it in order to understand the interactions between global, natural, social and human systems, and how such interactions affect the sustainability contests. Building this new scientific area requires the assimilation of knowledge and mastery of tools that are seldom addressed by individual disciplines and scientific areas with an integrated approach. Today, disciplinary science deeply contributes to understand the function of the various pieces that make up our world but has gaps in understanding how these parts relate to each other.

The Universidade de Lisboa PhD programme in Sustainability Science addresses this challenge by offering: an innovative programme which seeks interdisciplinarity, the application of science to real problems, and the integration of knowledge and innovation with the participation of society and citizens.

The goal of this PhD programme is to promote excellent and internationally competitive advanced training, transversely integrating solid and up-to-date knowledge for sustainable development.

Sociology

An inter-university programme offered by Universidade de Lisboa (ICS, ISCSP and ISEG), Universidade Nova de Lisboa, Universidade de Évora and Universidade do Algarve.

This PhD benefits from the theoretical and empirical heritage accumulated through the history of sociology, and it also develops a new direction in the face of the critical challenges of contemporary society. These are mirrored in the title and the chosen keywords.

“Open” societies are replacing the social frameworks of the past in new and unpredictable ways, by combining the local and the global, the national and the international, private and public, practices and values, and individual biographies and collective standards, which have upset integrating contexts that existed before and require new ones.

“Inclusive” societies emphasise the role of social institutions, territorial regions, groups and networks (both formal and informal) in the cohesion of a fragile, divided and heterogeneous social fabric. This overview can be broken down into more specific goals and themes, whose nature and contours are addressed throughout the programme, namely: public policy and social innovation; mobility, life projects and social dynamics; science, reflexivity and knowledge transfer; structure, institutions and inequalities.

Political Economy

The interdisciplinary PhD in Political Economy provides the opportunity to acquire advanced training in the research of contemporary capitalist systems.

In line with several international trends in the social sciences, the programme encourages critical and plural study on systems current socio-economic conditions.

Capitalism is a socio-economic and power system; a diversified system throughout and in each moment of its history; a changing system in its institutional frameworks and scales. Critically studying capitalism is the main objective of the interdisciplinary PhD in Political Economy, in line with a relevant international trend in the social sciences.

This programme particularly values the creation of knowledge about capitalism in Portugal and its evolution, inserting it in the European and global contexts that have shaped and shape its trajectories of convergence and divergence.

The PhD in Political Economy is a combination from research projects, relevant publications, advanced training experience and a long journey of joint work developed at different levels.

The PhD in Political Economy results from a partnership between the following universities:

- ISCTE - Lisbon University Institute (ISCTE-IUL);
- Faculty of Economics, University of Coimbra (FEUC);
- Lisbon School of Economics and Management, University of Lisbon (ISEG-UL).

Useful Information

Admission

Applications for all the PhD Programmes at ISEG are online. The deadline for the 2020/21 intake is 30 April, but you are advised to apply before 29 February, especially if you need a STUDENT VISA. A solid academic background is required in Mathematical Analysis and Statistics. This normally implies holding a bachelors degree in Mathematics, Mathematics with Economics or Statistics, and some of the bachelors degrees in Economics, Finance or Management. Applicants from other academic disciplines will be considered on a case-by-case basis. Accepted applicants have normally achieved a minimum of 14 out of 20 points in the Portuguese system or a 2:1 honours in the British system (or equivalent, e.g., G.P.A. 3.0). Candidates are selected according to their BSc grade, their CV details and possibly an interview. If you are in the last year of studies for your BSc, you can apply on the basis of your predicted grade and your application will be considered for a conditional offer.

Student Visa

If you are not an EU, EEA or Swiss citizen, then you need a Student VISA. After you have definitely decided joining the Masters and have paid the registration fee to secure your place, you will be able to download the acceptance letter on the Aquila Portal, which you need to apply for a Study Visa. At this stage, you should contact the nearest Portuguese Consulate or Embassy, in your country, to find out which other documents are necessary. If there is no Portuguese Consulate or Embassy in your country, ISEG will let you know where to apply. We advise all students entering in Portugal with a visa to book an appointment with Helena Cardoso, from the ISEG Masters & PhD Office, on the first working day after their arrival in Portugal. Helena will help you with the first contact with SEF – the Immigration Authority. This is particularly urgent if your passport was not stamped upon arrival in Portugal.

Application

Step 1

Fill out the online application form. You will need to attach some digitalised documents: photo, ID document (passport if you require a Student Visa), bachelors degree certificate, academic transcript of records and CV, and you must also pay the application fee. You may submit these documents later on, and/or pay the application fee by logging on to our site, using the username and password that were previously supplied by us via E-mail. Your application will be considered valid only after all documents have been submitted and the application fee has been paid. Payment can be made in three ways: by ATM — only if you hold a Portuguese Bank Account, by Bank Transfer or by Paypal — if you live outside Portugal. Please note that you do not need to have a Paypal account, you just need to have a credit card that is accepted by Paypal. If payment is made by Bank Transfer, then you need to send proof to smd@iseg.ulisboa.pt

Step 2

After your application has been validated, it will then be analysed by ISEG (you may be contacted at this stage by the Programme Coordinators). Next you will receive an E-mail after a decision has been made.

Step 3

If you are accepted, and to secure a place for the PhD programmes, you are given a deadline for acceptance (this is done online) and for the payment of a non-refundable registration fee. This can be done in the same way as the application fee.





Around *Lisbon*

Lisbon is one of the most attractive cities to live in Europe and it boasts a good quality of living, where the past and the future meet, under long hours of brilliant sunlight and a beautiful moon.

10 reasons to **study and live in Lisbon**

01

A cosmopolitan and multicultural city, well-served by public transport, whose city centre is 15 minutes' journey from the airport and less than 3 hours from most European capitals.

02

A green city, with lots of gardens and parks, offering great opportunities for outdoor activities and sports.

03

Bordered by the Tagus River and situated near fantastic beaches ideal for watersports, such as sailing and surfing, that can be practiced all year long, on account of the mild climate and 4 to 5 months of high summer temperatures.

04

A historic city, the former capital of the Portuguese Empire from the 14th to the 19th centuries, with many fine monuments and museums that conserve the memory and the cultural wealth of that period.

05

A European hub for contemporary art and design, hosting important artistic events all year long.

06

A safe city.

07

Offers a wide range of gastronomic choices, with different types of ethnic cooking. Portuguese food is typically Mediterranean and is very natural and healthy, with an abundance of fresh fish, vegetables, fruit, rice and olive oil.

08

An affordable city, with lower living costs than most European cities, including Madrid, Barcelona, London and Paris.

09

Universidade de Lisboa is the biggest university in Portugal and tuition fees are very competitive when compared with other European universities of a similar quality.

10

Universidade de Lisboa attracts a lot of foreign students from Portuguese-speaking countries and also from other European countries. Networking is an important benefit from studying at ISEG, Universidade de Lisboa.



Monthly Expenses

Accommodation	600€ / 700€
Meals	200€ / 250€
Transport	35€ / 40€
Leisure	100€ / 120€
University (books, etc..)	50€
TOTAL	985€ / 1,160€

The cost of living in Portugal is lower than in most EU countries. Here are the prices of some everyday articles.



Cost of Living Examples

1 Coffee	0.65€
1 Coke (33cl)	1.20€
Water Bottle 50cl (Cafeteria)	1.00€
Cinema admission	6.00€
Daily newspaper	1.50€

Full meal in a standard restaurant	15.00€
Meal at the school canteen (includes drink, soup, dish and desert)	2.40€
Subway ticket	1.45€
Carris bus ticket	2.00€
Photocopy (A4 size)	0.05€

The prices may be subject to change

How to get to ISEG from the Airport

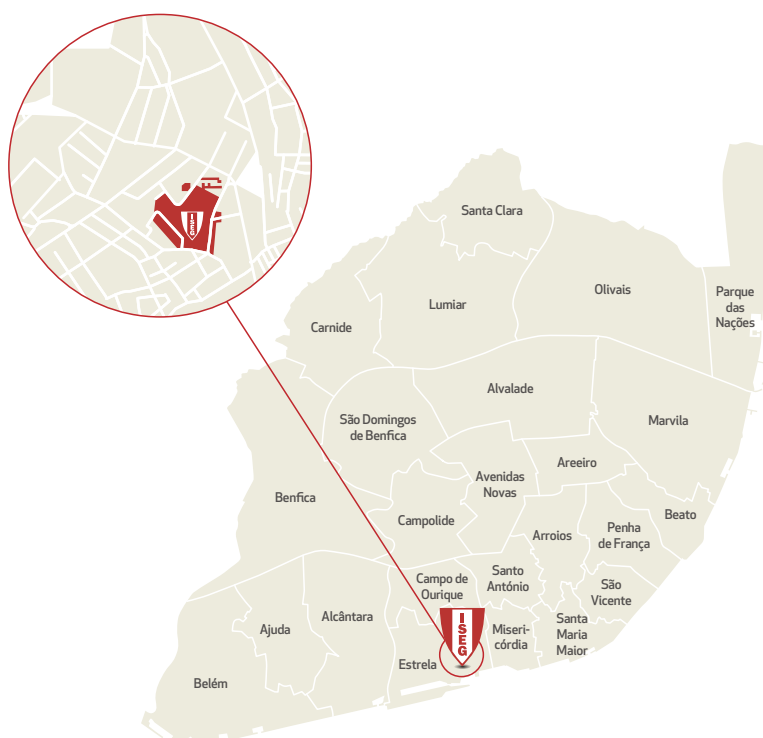
Lisbon is just a few hours away from North America (about 6 to 8 hours) and 2 to 3 hours from most European cities. Lisbon's international airport (Aeroporto Humberto Delgado) is only 7km away from the city centre.

Carris Bus

744 - 727	Av. D. Carlos 1 minute by foot
744 - 773	Lapa 5 minutes by foot
744 - 738	Estrela 5 minutes by foot

Subway

Take the The Yellow Line, and exit at Estação do Rato (15 minutes walk to ISEG).





ISEG *campus*

ISEG Library

The ISEG library is located in a five floor building with large reading/study rooms and the largest collection of works in the field of Economics and Business in Portugal. Students also have access to several bibliographic databases with up to date statistical information, and are also able to consult various case studies for free, with extended opening hours. Equally important are the open access partnerships with other top level libraries and institutions, such as the European Union Documental Centre and the American Corner, in partnership with the American Embassy in Portugal.

The Scientific Repository of ISEG, which includes Theses, Papers, Working Documents, etc., has more than 3,500 documents.

<u>78,085</u>	<u>70</u>	<u>90</u>	<u>42</u>	<u>B-ON</u>	<u>31,498</u>	<u>17,161</u>
Books	E-Books	Scientific Journals	Databases	Online Library	Working documents	Journals and Books from various fields of knowledge



ISEG Bookshop

In the ISEG bookshop, books and other materials are on sale to support courses taught at the School.

ISEG Study Space

ISEG provides PhD students with a study space in one of the buildings of the Campus, with extended opening hours 7 days a week.

All the lecture rooms and communal areas have computer equipment. The Eduroam wifi network is available throughout the School.

ISEG Restaurants

At ISEG you can find a wide range of restaurants (the University refectory, a restaurant, 3 snack-bars, and various vending machines).

Easy Public Transport Access & Free Private Car Parking

ISEG is easily accessible by public transports and has also a private car park to where PhD students have free access.

U LISBOA | UNIVERSIDADE
DE LISBOA



RUA DO QUELHAS, 6, 1200-781 LISBOA | PORTUGAL
(+351) 213 925 800
—
WWW.ISEG.ULISBOA.PT

RANKINGS:



ACCREDITATIONS AND PARTNERSHIPS:

