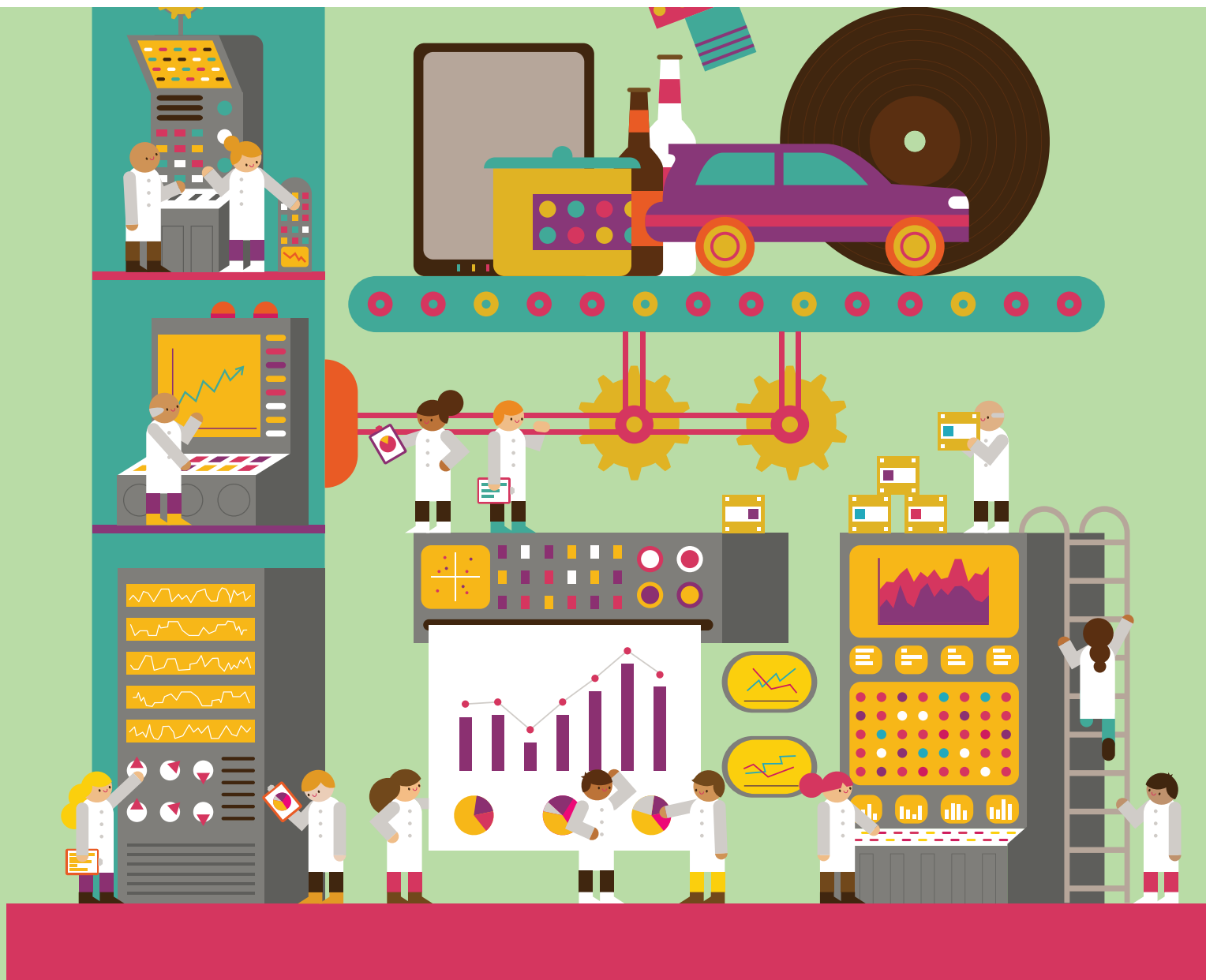




LISBON
SCHOOL OF
ECONOMICS &
MANAGEMENT
UNIVERSIDADE DE LISBOA



ISEG SPRING  SCHOOL 2017

SMART ENTREPRENEURS FOR SMART MANUFACTURING: GUIDELINES FOR A NEW ERA IN INDUSTRIAL POLICY

ORADOR/SPEAKER: WIM NAUDÉ
Maastricht School of Management

26, 27 / 04 / 2017
18.30 PM – 21.30 PM

SALA / ROOM: 26/04

NOBLE HALL

27/04

AMPHITHEATER 1